

NWIFCA Netting Permit Flexible Conditions

The technical permit conditions:

Interpretation

- 1) In the following flexible permit conditions:
 - (a) “the byelaw” means North Western Inshore Fisheries and Conservation Authority Byelaw XX – Netting Permit Byelaw;
 - (b) “drift net” means a net which remains throughout the entirety of its use free of any contact with any part of the foreshore or seabed or any object or structure thereon or therein;
 - (c) “fixed net” means a net that comes into contact with any part of the foreshore or sea bed or any structure thereon or therein.
 - (d) “flue net” means
 - (e) “fishing” includes searching for sea fisheries resources, shooting, setting, towing, hauling, of a fishing gear, and taking sea fisheries resources onboard;
 - (f) “*crustaceans*” mean any species belonging to the taxonomic subphylum Crustacea, including, but not limited to, European lobster (*Homarus gammarus*), brown crab (*Cancer pagarus*), Norwegian lobster (*Nephrops norgevicus*), common prawn (*Palaemon serratus*), northern prawn (*Pandalus borealis*) and common shrimp (*Crangon crangon*).

Catch Restrictions

- 2) As provided by paragraph 51 of the byelaw, the following permit conditions apply:
 - 3) Category 2 permit holders may be issued an entitlement for the retention European Seabass as a bycatch.
 - 4) If issued the entitlement is valid for one net subject to associated gear restrictions.

Gear Restrictions

- 5) As provided by paragraph 51 of the byelaw, the following permit conditions apply:
 - (a) Mesh must not measure less than 90mm;
 - (b) Category 2 Permit holders can use a maximum aggregate of 400m of nets;
 - (c) Category 3 Permit holders can use a maximum aggregate of 100m of nets;
 - (d) No net shall be set either from a vessel or the shore within 200m of another net;
 - (e) No net shall be set across a channel or, in the use of a beach-set net, touch the edge of a stream or channel at low water;
 - (f) A flue net issued under a Category 2 Permit must:
 - (i) not exceed 75m across its headline;
 - (ii) not be left in the water for more than 30 minutes between being shot and being hauled;
 - (iii) be actively worked by splashing during the operation;
 - (iv) not be used or carried in conjunction with any other flue net.

Spatial Conditions

- 6) As provided by paragraph 51 of the byelaw, the following permit conditions apply:
 - (a) In the areas defined by coordinates set out in Annex I, a permit holder is not authorised to use a net within the period set out in paragraph 7 a)

Temporal Restrictions

- 7) As provided by paragraph 51 of the byelaw, the following permit conditions apply:
 - (a) A permit holder or named representative is not authorised to use a net in any of the defined areas set out in Annex I between 1st May and 30th November.

Annex I

Schedule

- 1) Areas of NWIFCA District prohibited from fishing between 1st May and 30th November each year.

Area 1 – Upper Solway



Legend

Netting Areas

■ Fixed and mobile netting prohibited from 1st May to 30th November.

Point	Latitude (Decimal Degrees)	Longitude (Decimal Degrees)
A	54.95412	-3.32746
B	54.89971	-3.33738
C	54.85414	-3.29129
D	54.85492	-3.28976
E	54.90800	-3.21226
F	54.90366	-3.21177
G	54.98572	-3.05615
H	54.93221	-3.06431

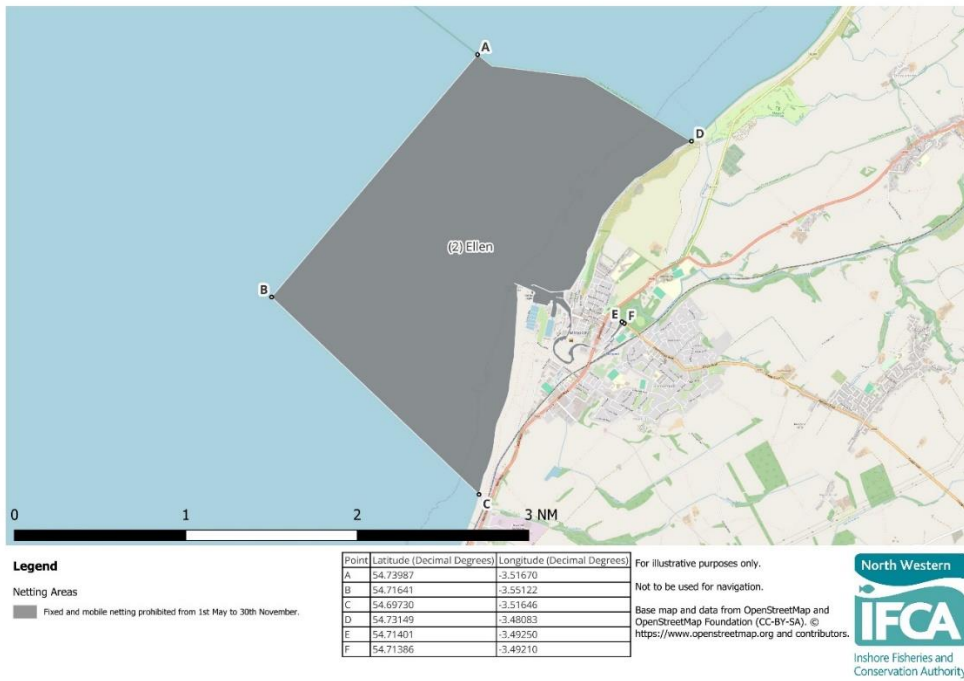
For illustrative purposes only.

Not to be used for navigation.

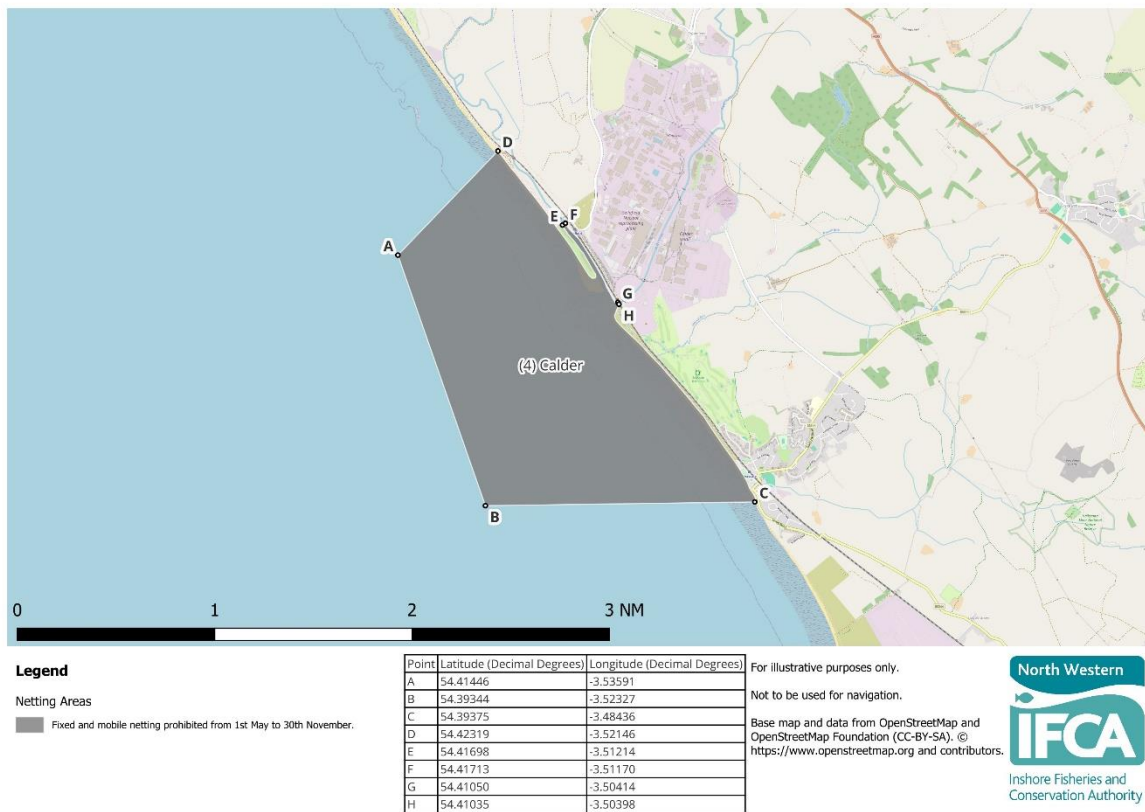
Base map and data from OpenStreetMap and OpenStreetMap Foundation (CC-BY-SA). © <https://www.openstreetmap.org> and contributors.



Area 2 – River Ellen & Derwent



Area 3 – River Calder



Area 4 – Ravenglass Estuary



Legend

Netting Areas

Fixed and mobile netting prohibited from 1st May to 30th November.

Point	Latitude (Decimal Degrees)	Longitude (Decimal Degrees)
A	54.35488	-3.47754
B	54.32841	-3.44718
C	54.32470	-3.42250
D	54.36983	-3.46441
E	54.35388	-3.42322
F	54.35025	-3.41096

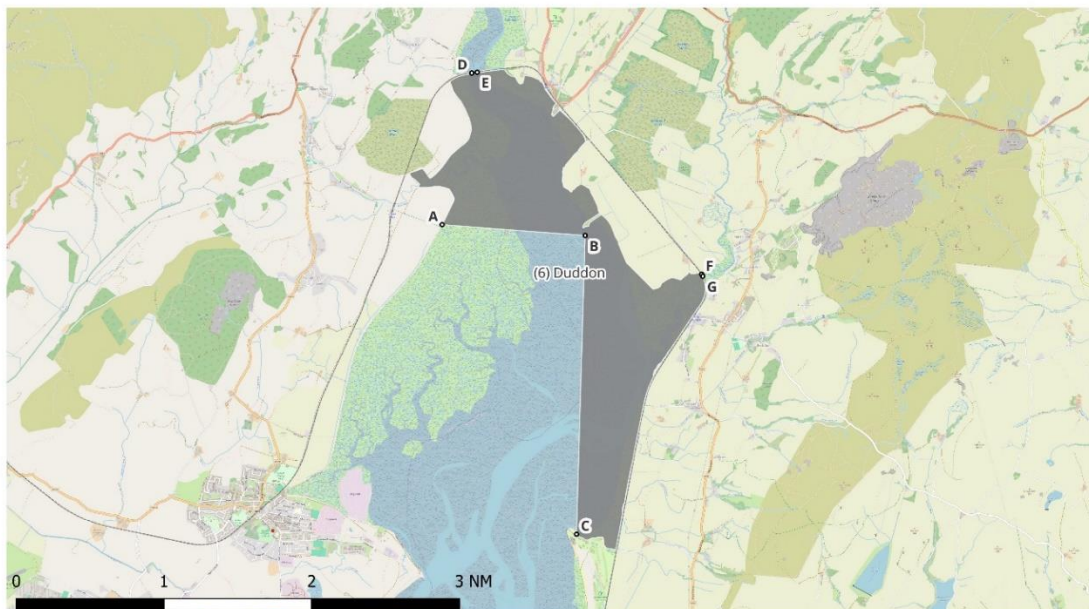
For illustrative purposes only.

Not to be used for navigation.

Base map and data from OpenStreetMap and OpenStreetMap Foundation (CC-BY-SA). © <https://www.openstreetmap.org> and contributors.



Area 5 – Duddon Estuary



Legend

Netting Areas

Fixed and mobile netting prohibited from 1st May to 30th November.

Point	Latitude (Decimal Degrees)	Longitude (Decimal Degrees)
A	54.24288	-3.23583
B	54.24167	-3.20833
C	54.20812	-3.21000
D	54.25990	-3.23014
E	54.25998	-3.22910
F	54.23733	-3.18596
G	54.23709	-3.18574

For illustrative purposes only.

Not to be used for navigation.

Base map and data from OpenStreetMap and OpenStreetMap Foundation (CC-BY-SA). © <https://www.openstreetmap.org> and contributors.



Area 6 – River Leven



Legend

Netting Areas

Fixed and mobile netting prohibited from 1st May to 30th November.

Point	Latitude (Decimal Degrees)	Longitude (Decimal Degrees)
A	54.19050	-3.05346
B	54.17124	-2.99216
C	54.19942	-3.04463
D	54.19734	-3.03875
E	54.17945	-2.98953
F	54.17934	-2.98953

For illustrative purposes only.

Not to be used for navigation.

Base map and data from OpenStreetMap and OpenStreetMap Foundation (CC-BY-SA). © <https://www.openstreetmap.org> and contributors.



Area 7 – River Kent



Legend

Netting Areas

Fixed and mobile netting prohibited from 1st May to 30th November.

Point	Latitude (Decimal Degrees)	Longitude (Decimal Degrees)
A	54.19453	-2.88760
B	54.19073	-2.86442
C	54.20565	-2.84242
D	54.20508	-2.83548
E	54.20406	-2.87180
F	54.20413	-2.87156

For illustrative purposes only.

Not to be used for navigation.

Base map and data from OpenStreetMap and OpenStreetMap Foundation (CC-BY-SA). © <https://www.openstreetmap.org> and contributors.



Area

Area 8 – River Keer



Legend

Netting Areas

Fixed and mobile netting prohibited from 1st May to 30th November.

Point	Latitude (Decimal Degrees)	Longitude (Decimal Degrees)
A	54.15383	-2.82306
B	54.08271	-2.83512
C	54.15713	-2.80501
D	54.15700	-2.80489
E	54.13357	-2.77325
F	54.13346	-2.77315

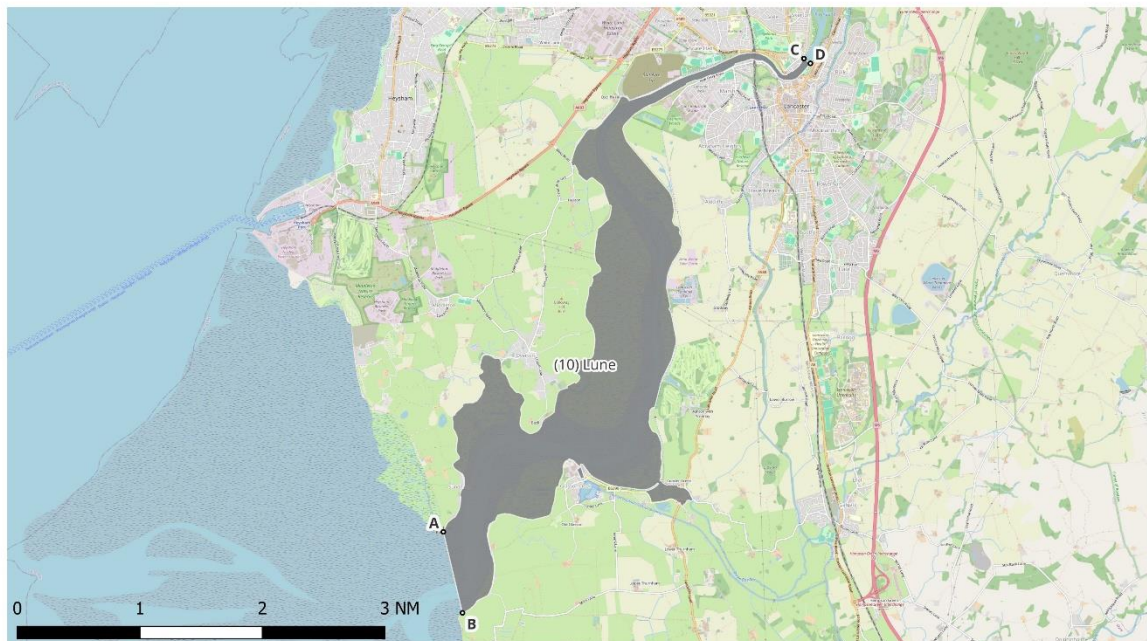
For illustrative purposes only.

Not to be used for navigation.

Base map and data from OpenStreetMap and OpenStreetMap Foundation (CC-BY-SA). © <https://www.openstreetmap.org> and contributors.



Area 9 – River Lune



Legend

Netting Areas

Fixed and mobile netting prohibited from 1st May to 30th November.

Point	Latitude (Decimal Degrees)	Longitude (Decimal Degrees)
A	53.99081	-2.88040
B	53.97985	-2.87599
C	54.05483	-2.79732
D	54.05418	-2.79582

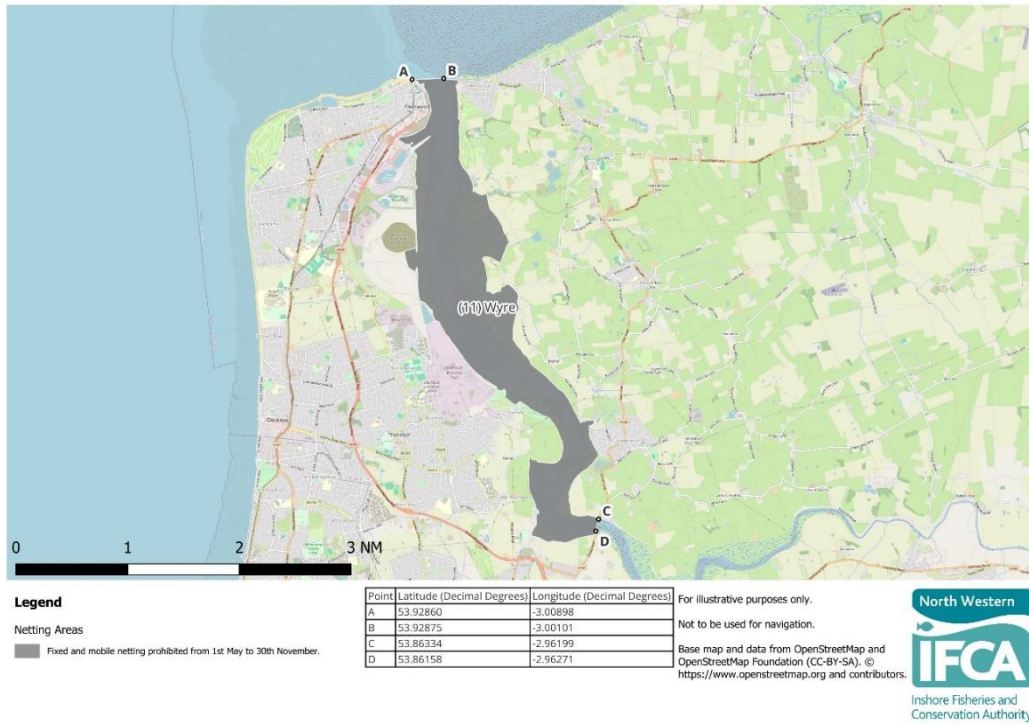
For illustrative purposes only.

Not to be used for navigation.

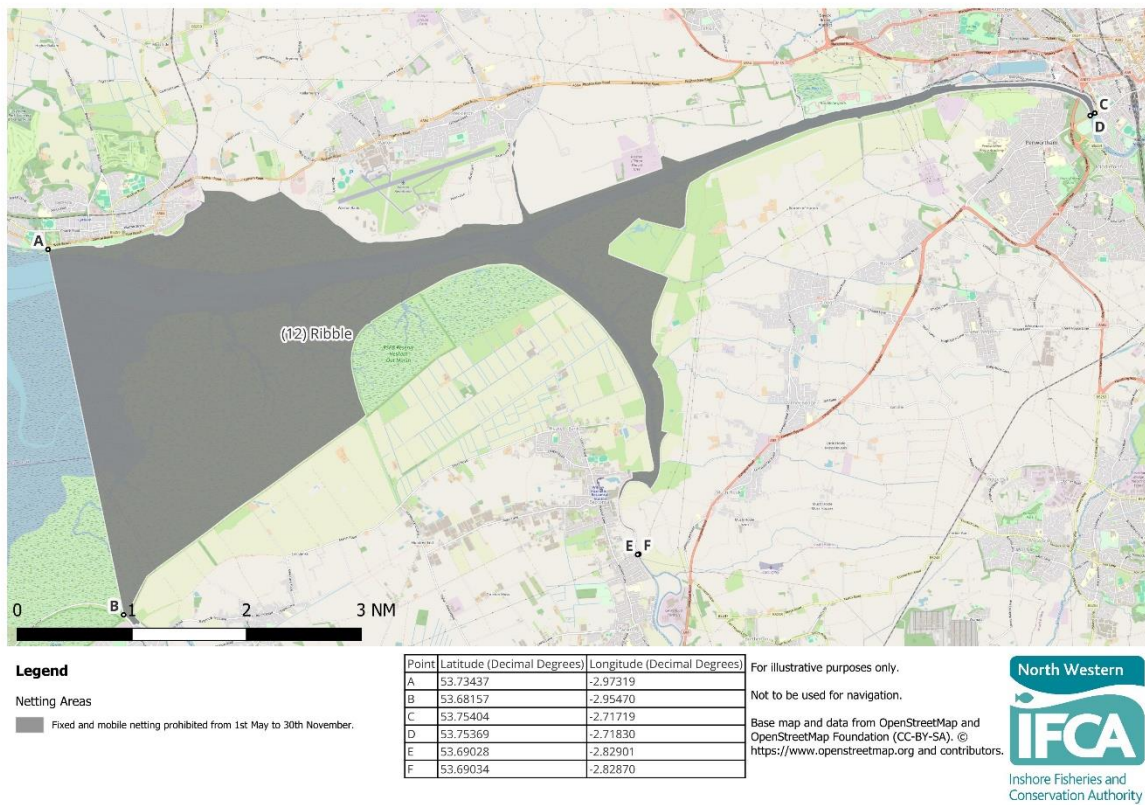
Base map and data from OpenStreetMap and OpenStreetMap Foundation (CC-BY-SA). © <https://www.openstreetmap.org> and contributors.



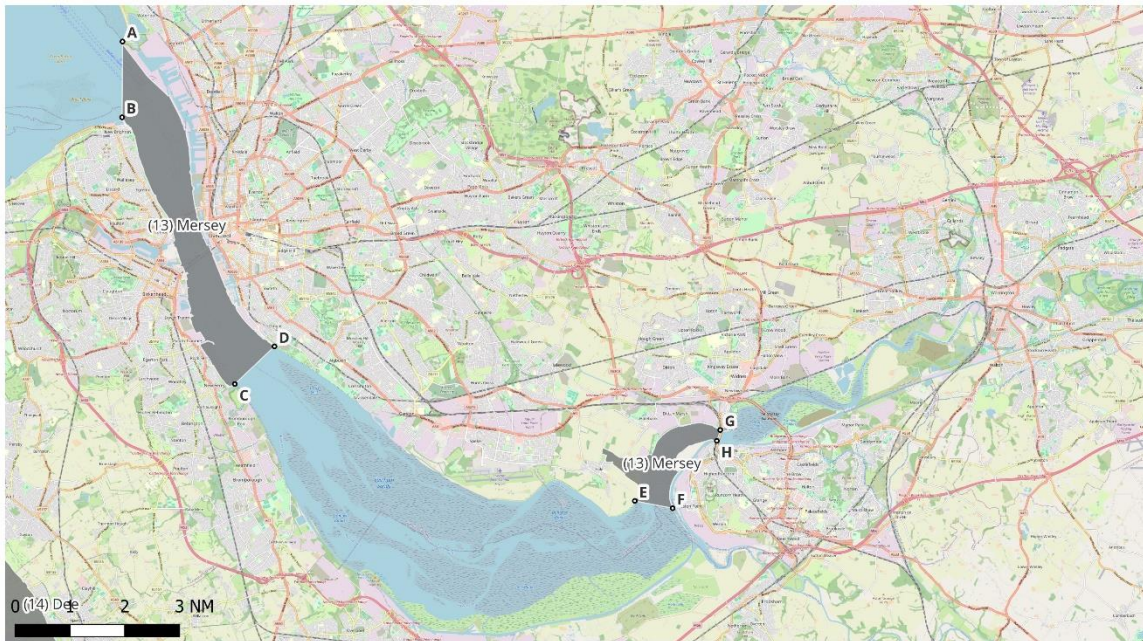
Area 10- Wyre Estuary



Area 11 - Ribble Estuary



Area 12 - River Mersey



Legend

Netting Areas

Fixed and mobile netting prohibited from 1st May to 30th November.

Point	Latitude (Decimal Degrees)	Longitude (Decimal Degrees)
A	53.46579	-3.04097
B	53.44289	-3.04122
C	53.36230	-2.98398
D	53.37366	-2.96387
E	53.32688	-2.78102
F	53.32468	-2.76182
G	53.34837	-2.73768
H	53.34507	-2.73939

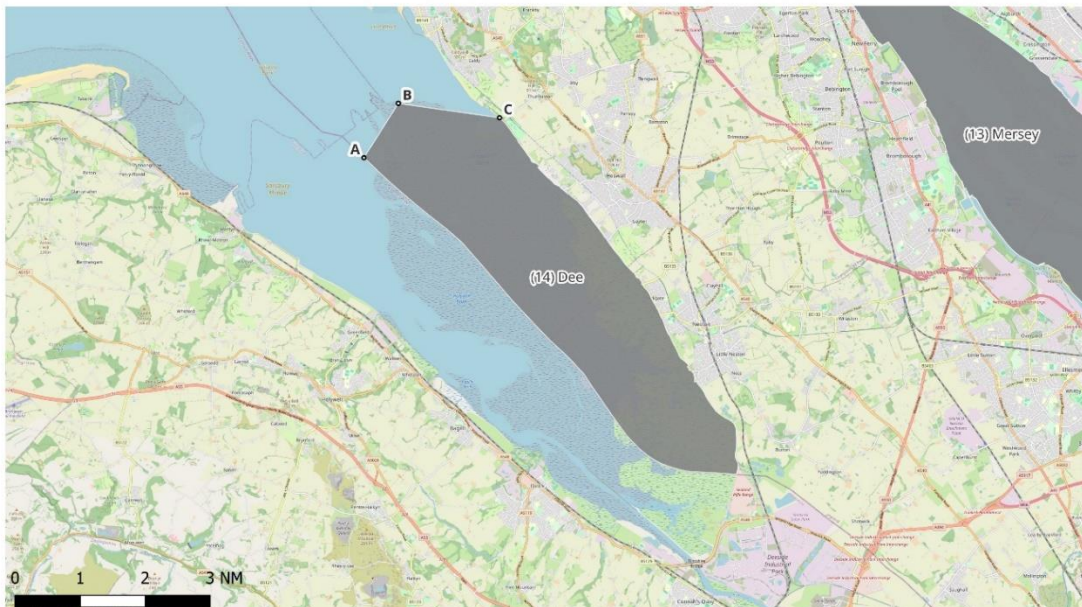
For illustrative purposes only.

Not to be used for navigation.

Base map and data from OpenStreetMap and OpenStreetMap Foundation (CC-BY-SA). © <https://www.openstreetmap.org> and contributors.



Area 13 - Dee Estuary



Legend

Netting Areas

Fixed and mobile netting prohibited from 1st May to 30th November.

Point	Latitude (Decimal Degrees)	Longitude (Decimal Degrees)
A	53.33286	-3.20765
B	53.34667	-3.19300
C	53.34300	-3.14983

For illustrative purposes only.

Not to be used for navigation.

Base map and data from OpenStreetMap and OpenStreetMap Foundation (CC-BY-SA). © <https://www.openstreetmap.org> and contributors.

