

## **NWIFCA Netting Permit Flexible Conditions**

The technical permit conditions:

### **Interpretation**

- 1) In the following flexible permit conditions:
  - (a) “the byelaw” means North Western Inshore Fisheries and Conservation Authority Byelaw XX – Netting Permit Byelaw;
  - (b) “drift net” means a net which remains throughout the entirety of its use free of any contact with any part of the foreshore or seabed or any object or structure thereon or therein;
  - (c) “fixed net” means a net that comes into contact with any part of the foreshore or sea bed or any structure thereon or therein.
  - (d) “flue net” means
  - (e) “fishing” includes searching for sea fisheries resources, shooting, setting, towing, hauling, of a fishing gear, and taking sea fisheries resources onboard;
  - (f) “*crustaceans*” mean any species belonging to the taxonomic subphylum Crustacea, including, but not limited to, European lobster (*Homarus gammarus*), brown crab (*Cancer pagarus*), Norwegian lobster (*Nephrops norgevicus*), common prawn (*Palaemon serratus*), northern prawn (*Pandalus borealis*) and common shrimp (*Crangon crangon*).

### **Catch Restrictions**

- 2) As provided by paragraph 51 of the byelaw, the following permit conditions apply:
  - 3) Category 2 permit holders may be issued an entitlement for the retention European Seabass as a bycatch.
  - 4) If issued the entitlement is valid for one net subject to associated gear restrictions.

### **Gear Restrictions**

- 5) As provided by paragraph 51 of the byelaw, the following permit conditions apply:
  - (a) Mesh must not measure less than 90mm;
  - (b) Category 2 Permit holders can use a maximum aggregate of 400m of nets;
  - (c) Category 3 Permit holders can use a maximum aggregate of 100m of nets;
  - (d) No net shall be set either from a vessel or the shore within 200m of another net;
  - (e) No net shall be set across a channel or, in the use of a beach-set net, touch the edge of a stream or channel at low water;
  - (f) A flue net issued under a Category 2 Permit must:
    - (i) not exceed 75m across its headline;
    - (ii) not be left in the water for more than 30 minutes between being shot and being hauled;
    - (iii) be actively worked by splashing during the operation;
    - (iv) not be used or carried in conjunction with any other flue net.

### **Spatial Conditions**

- 6) As provided by paragraph 51 of the byelaw, the following permit conditions apply:
  - (a) In the areas defined by coordinates set out in Annex I, a permit holder is not authorised to use a net within the period set out in paragraph 7 a)

### **Temporal Restrictions**

- 7) As provided by paragraph 51 of the byelaw, the following permit conditions apply:
  - (a) A permit holder or named representative is not authorised to use a net in any of the defined areas set out in Annex I between 1<sup>st</sup> May and 30<sup>th</sup> November.

# Annex I

## Schedule

- 1) Areas of NWIFCA District prohibited from fishing between 1<sup>st</sup> May and 30<sup>th</sup> November each year.

### Area 1 – Upper Solway



**Legend**

**Netting Areas**

Fixed and mobile netting prohibited from 1st May to 30th November.

Point	Latitude (Decimal Degrees)	Longitude (Decimal Degrees)
A	54.95412	-3.32746
B	54.89971	-3.33738
C	54.85414	-3.29129
D	54.85492	-3.28976
E	54.90800	-3.21226
F	54.90366	-3.21177
G	54.98572	-3.05615
H	54.93221	-3.06431

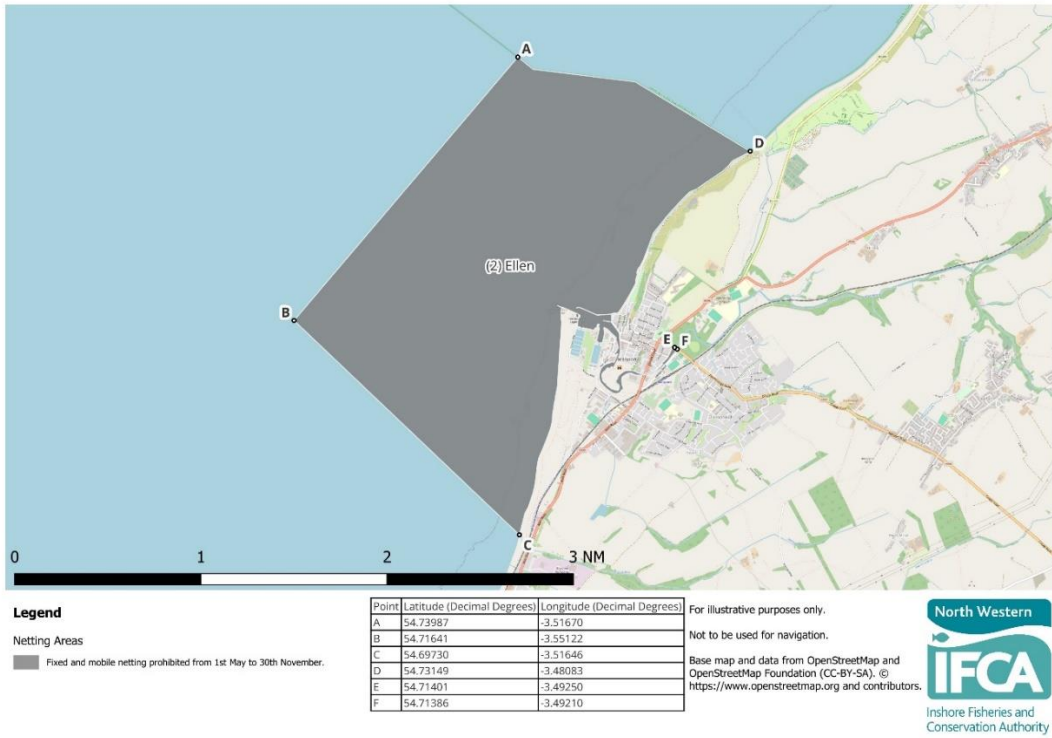
For illustrative purposes only.

Not to be used for navigation.

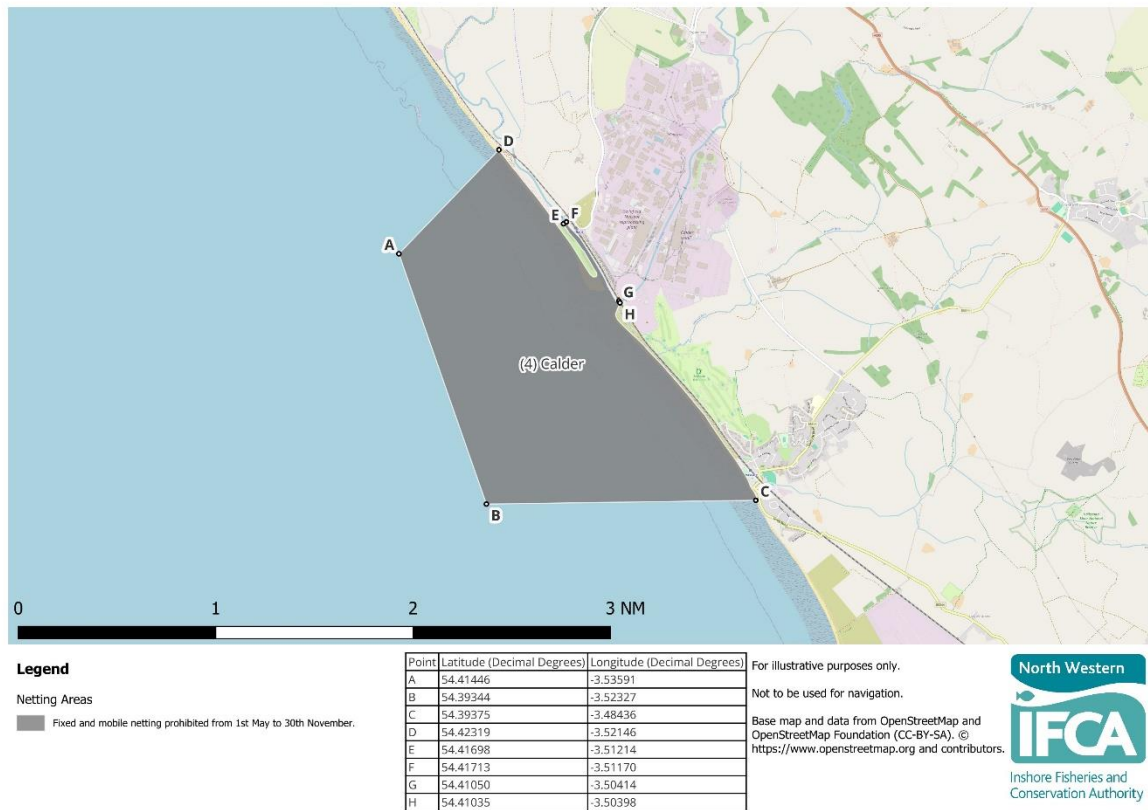
Base map and data from OpenStreetMap and OpenStreetMap Foundation (CC-BY-SA). © <https://www.openstreetmap.org> and contributors.



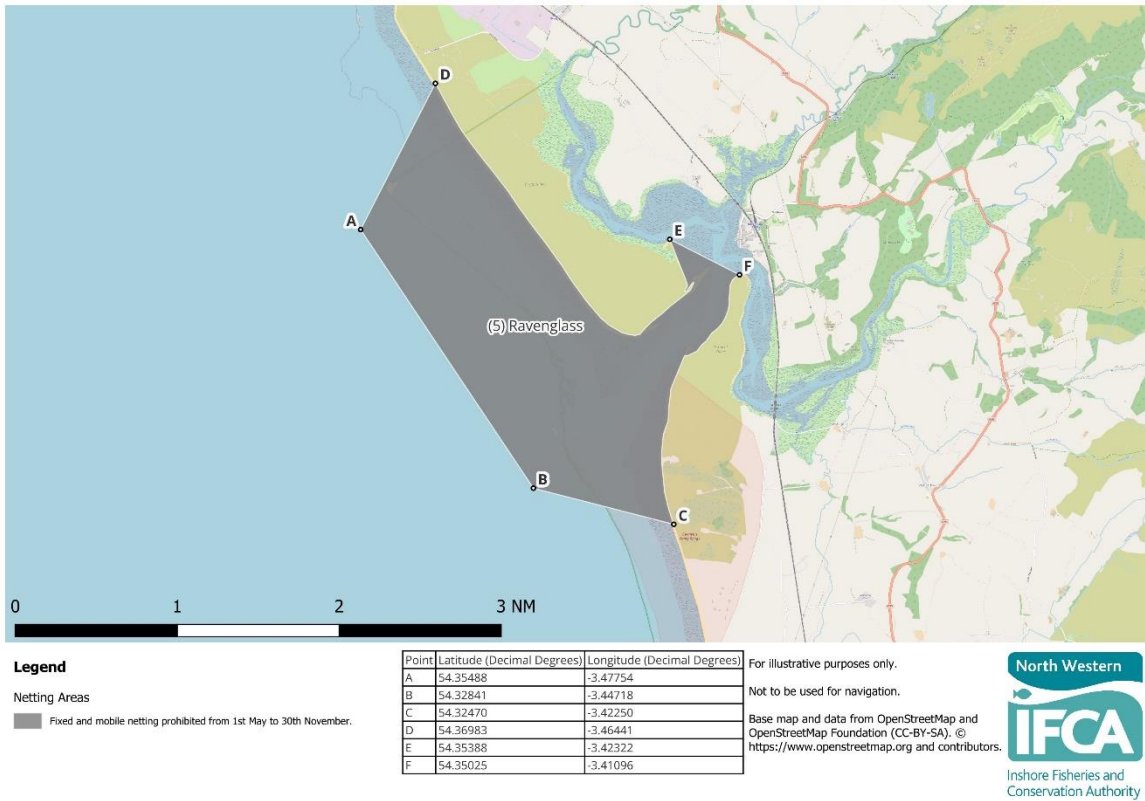
## Area 2 – River Ellen & Derwent



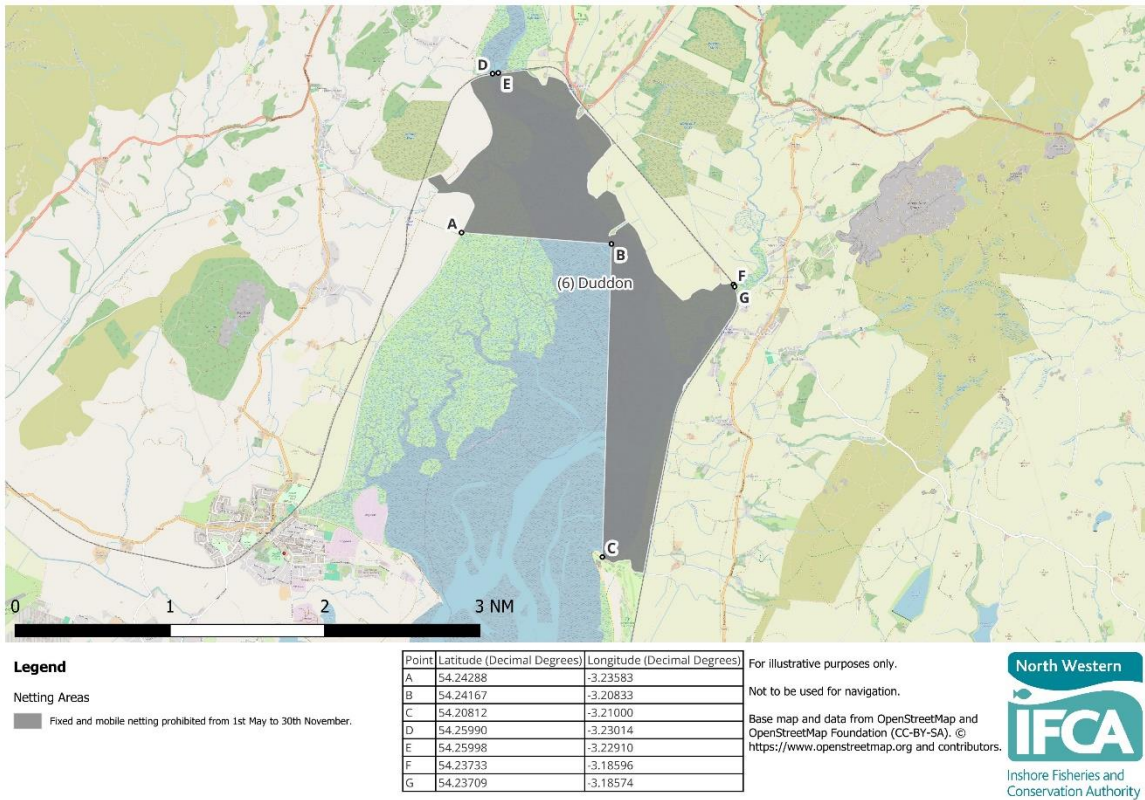
## Area 3 – River Calder



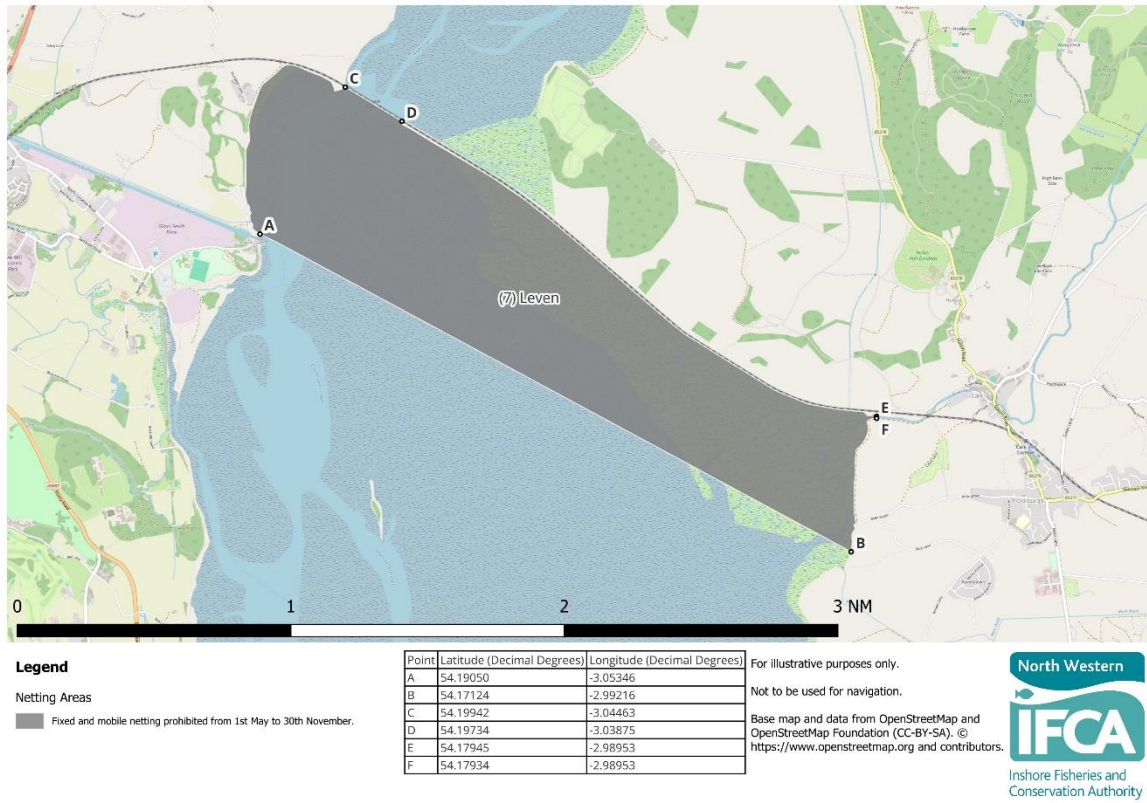
## Area 4 – Ravenglass Estuary



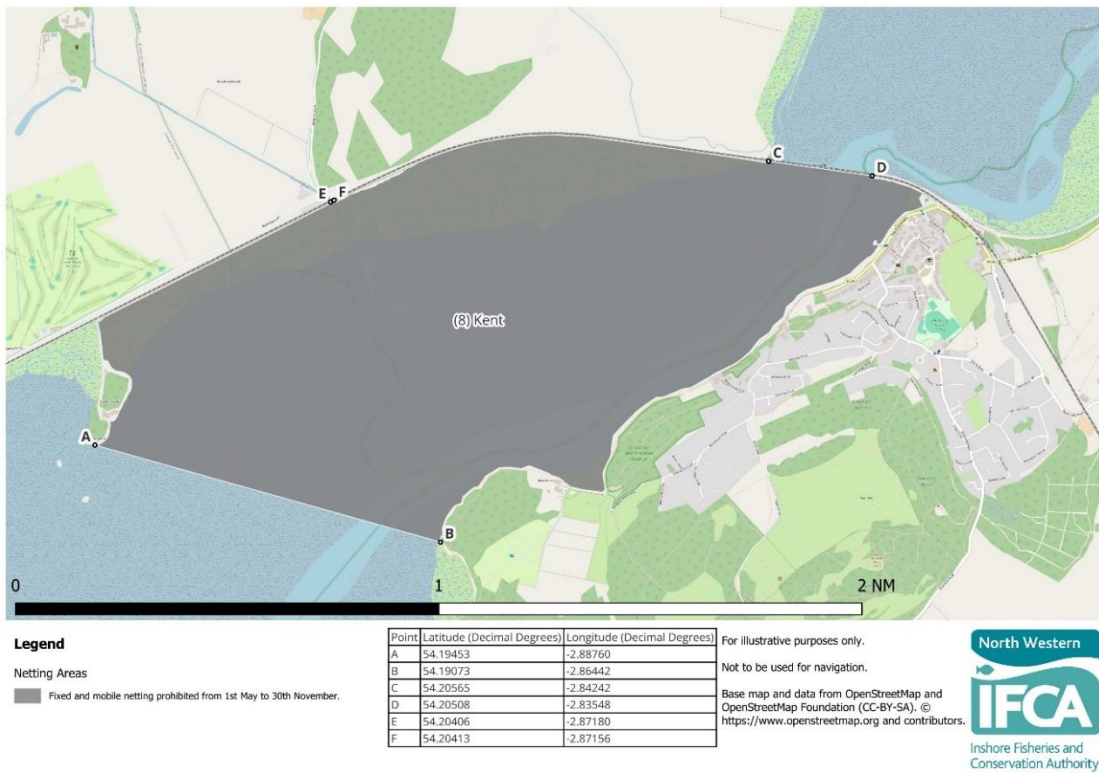
## Area 5 – Duddon Estuary



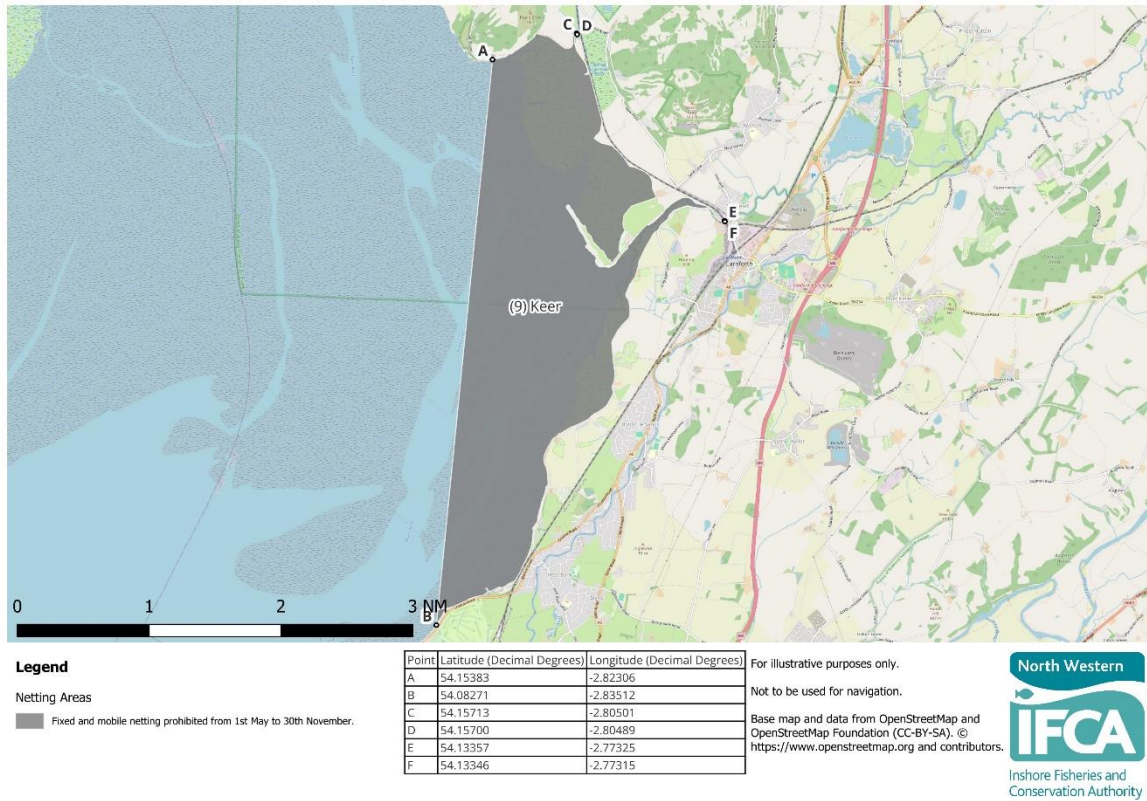
## Area 6 – River Leven



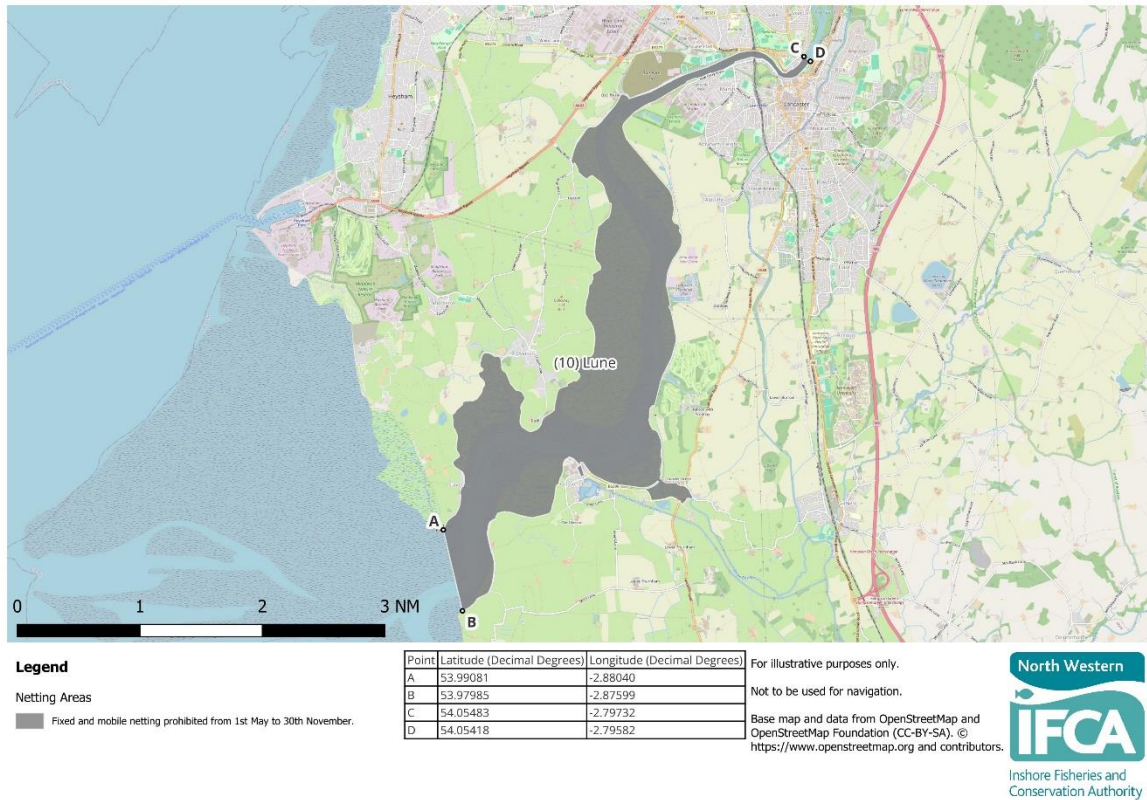
## Area 5 – River Kent



## Area 6 – River Keer



## River Lune



## Wyre Estuary



### Legend

#### Netting Areas

Fixed and mobile netting prohibited from 1st May to 30th November.

Point	Latitude (Decimal Degrees)	Longitude (Decimal Degrees)
A	53.92860	-3.00898
B	53.92875	-3.00101
C	53.86334	-2.96199
D	53.86158	-2.96271

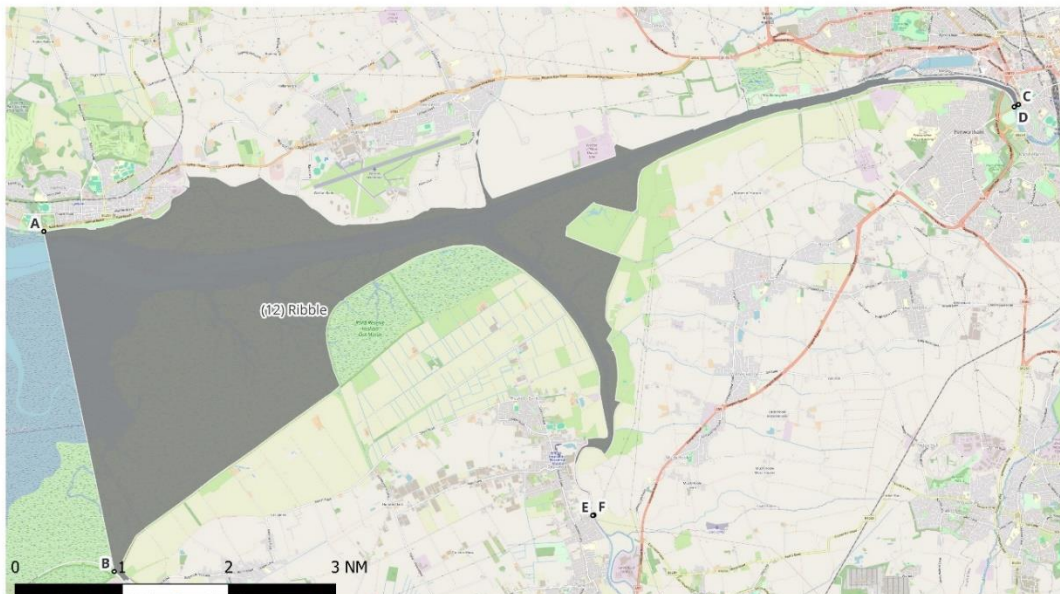
For illustrative purposes only.

Not to be used for navigation.

Base map and data from OpenStreetMap and OpenStreetMap Foundation (CC-BY-SA). © <https://www.openstreetmap.org> and contributors.



## Ribble Estuary



### Legend

#### Netting Areas

Fixed and mobile netting prohibited from 1st May to 30th November.

Point	Latitude (Decimal Degrees)	Longitude (Decimal Degrees)
A	53.73437	-2.97319
B	53.68157	-2.95470
C	53.75404	-2.71719
D	53.75369	-2.71830
E	53.69028	-2.82901
F	53.69034	-2.82870

For illustrative purposes only.

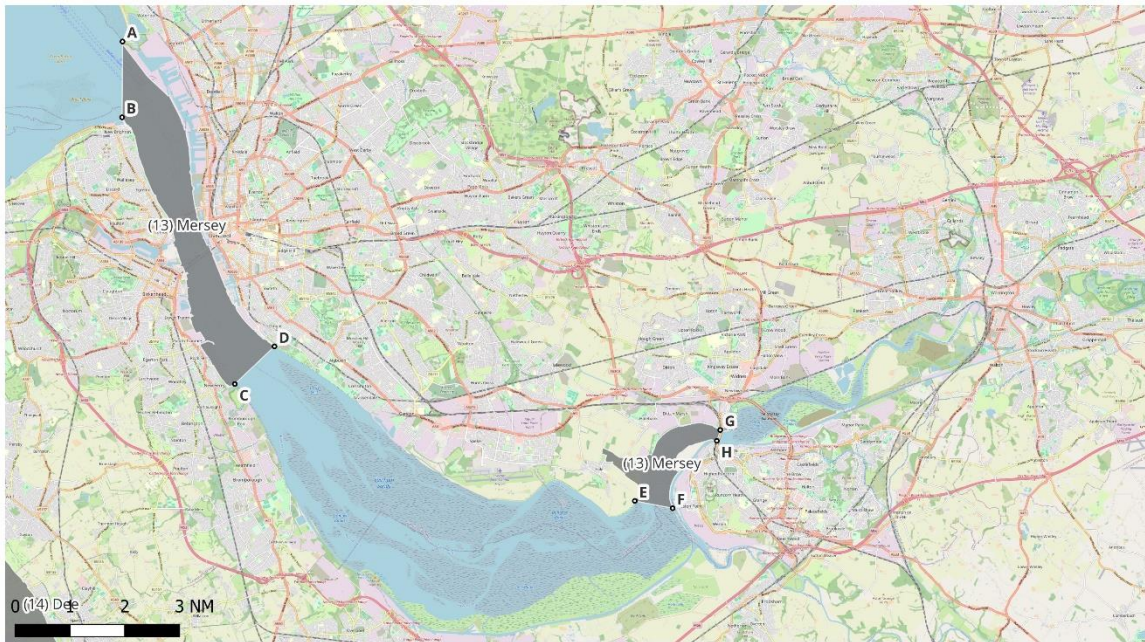
Not to be used for navigation.

Base map and data from OpenStreetMap and OpenStreetMap Foundation (CC-BY-SA). © <https://www.openstreetmap.org> and contributors.





## River Mersey



### Legend

#### Netting Areas

Fixed and mobile netting prohibited from 1st May to 30th November.

Point	Latitude (Decimal Degrees)	Longitude (Decimal Degrees)
A	53.46579	-3.04097
B	53.44289	-3.04122
C	53.36230	-2.98398
D	53.37366	-2.96387
E	53.32688	-2.78102
F	53.32468	-2.76182
G	53.34837	-2.73768
H	53.34507	-2.73939

For illustrative purposes only.

Not to be used for navigation.

Base map and data from OpenStreetMap and OpenStreetMap Foundation (CC-BY-SA). © <https://www.openstreetmap.org> and contributors.



## Dee Estuary



### Legend

#### Netting Areas

Fixed and mobile netting prohibited from 1st May to 30th November.

Point	Latitude (Decimal Degrees)	Longitude (Decimal Degrees)
A	53.33286	-3.20765
B	53.34667	-3.19300
C	53.34300	-3.14983

For illustrative purposes only.

Not to be used for navigation.

Base map and data from OpenStreetMap and OpenStreetMap Foundation (CC-BY-SA). © <https://www.openstreetmap.org> and contributors.

