

Fleetwood Mussel Inspection 07-06-23

Officers: AP, JH, AG, GE

LW: 08:45 1.4m (Liverpool Tides)

The Fleetwood mussel beds were inspected starting at Rossall Scar, then proceeding to Necking, Kings and finishing on Perch and Black Scar as shown in Figure 1.

Black Scar

Black Scar has had a 2023 mussel settlement of approximately 80-90% coverage (Figure 2). The mussel was less than 10mm and has started to put down mussel mud. The settlement was absent along the Eastern edge of the scar (Figure 3). There were small areas of size mussel along the channel edge. The approximate area of the mussel was 4.5 hectares.

Perch Scar

Perch Scar has had a 2023 mussel settlement of approximately 80-90% coverage (Figure 4). The mussel was less than 12mm and has started to put down mussel mud (Figure 5). There were small patches of size mussel along the channel edge. The approximate area of the mussel was 8.4 hectares.

Kings Scar

Kings Scar has had a 2023 mussel settlement of approximately 60-80% coverage (Figure 6). The mussel was less than 10mm and has started to put down mussel mud. There were small patches of 30-40mm mussel mixed in. The approximate area of the mussel was 6 hectares.

Neckings Scar

As officers are restricted on tide this year the inspection was carried out on a lesser spring tide and therefore the ebb was not a big as it would normally be, restricting the area of neckings scar which could be inspected. No new settlement was observed. Some 30-50mm mussel persists and the area appears to be sanding over compared to previous years (Figure 7).

Rossall Scar

The mussel on Rossall Scar was patchy and interspersed with cobble and live *Sabellaria alveolata* (Figure 8).

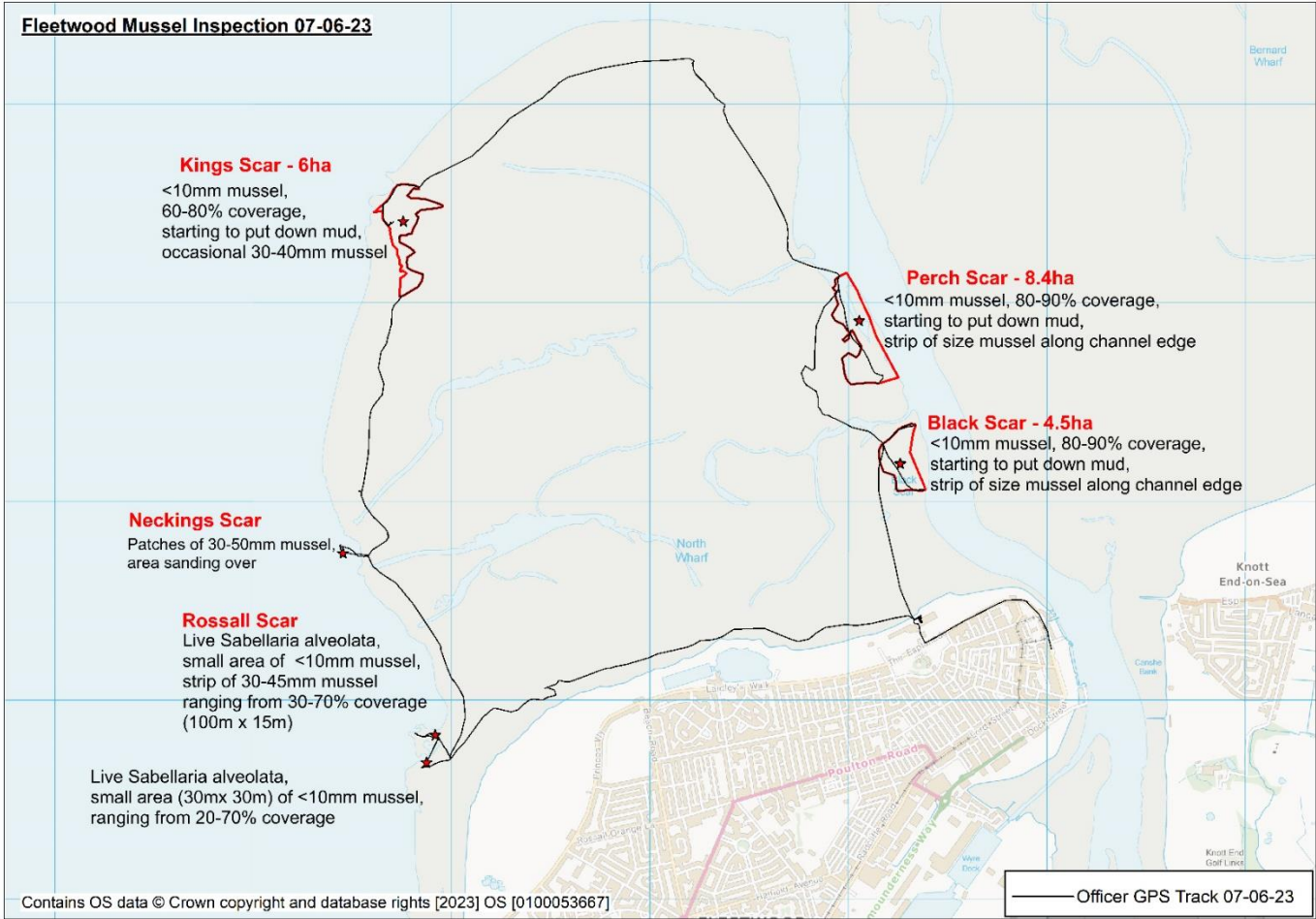


Figure 1. Overview of the mussel inspection 07-06-23.



Figure 2. Black scar 2023 mussel 07-06-23.



Figure 3. Eastern Edge of Black Scar 07-06-23.

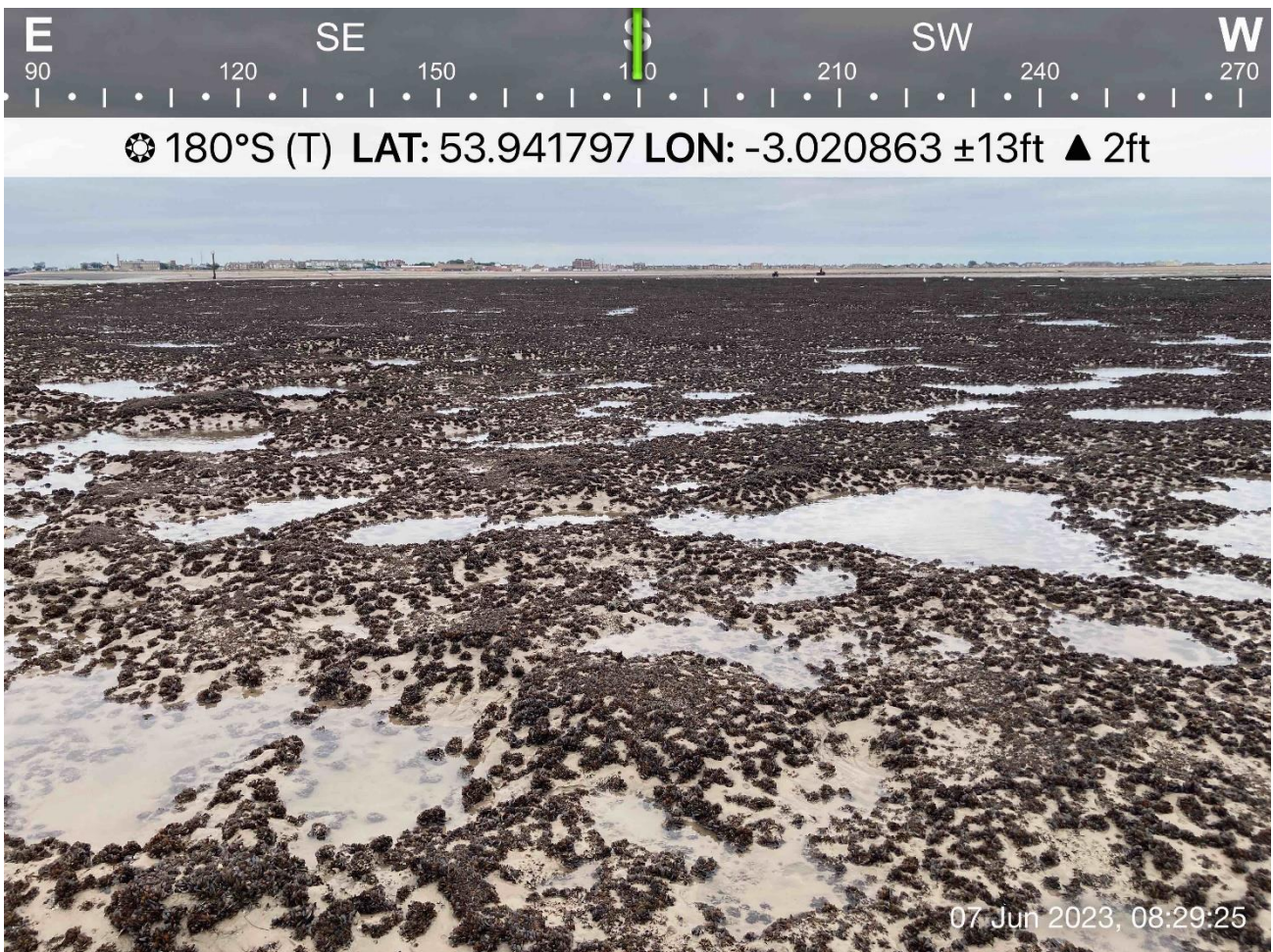


Figure 4. Perch Scar 2023 mussel settlement 07-06-23.



Figure 5. Perch Scar 2023 mussel and mussel mud 07-06-23.

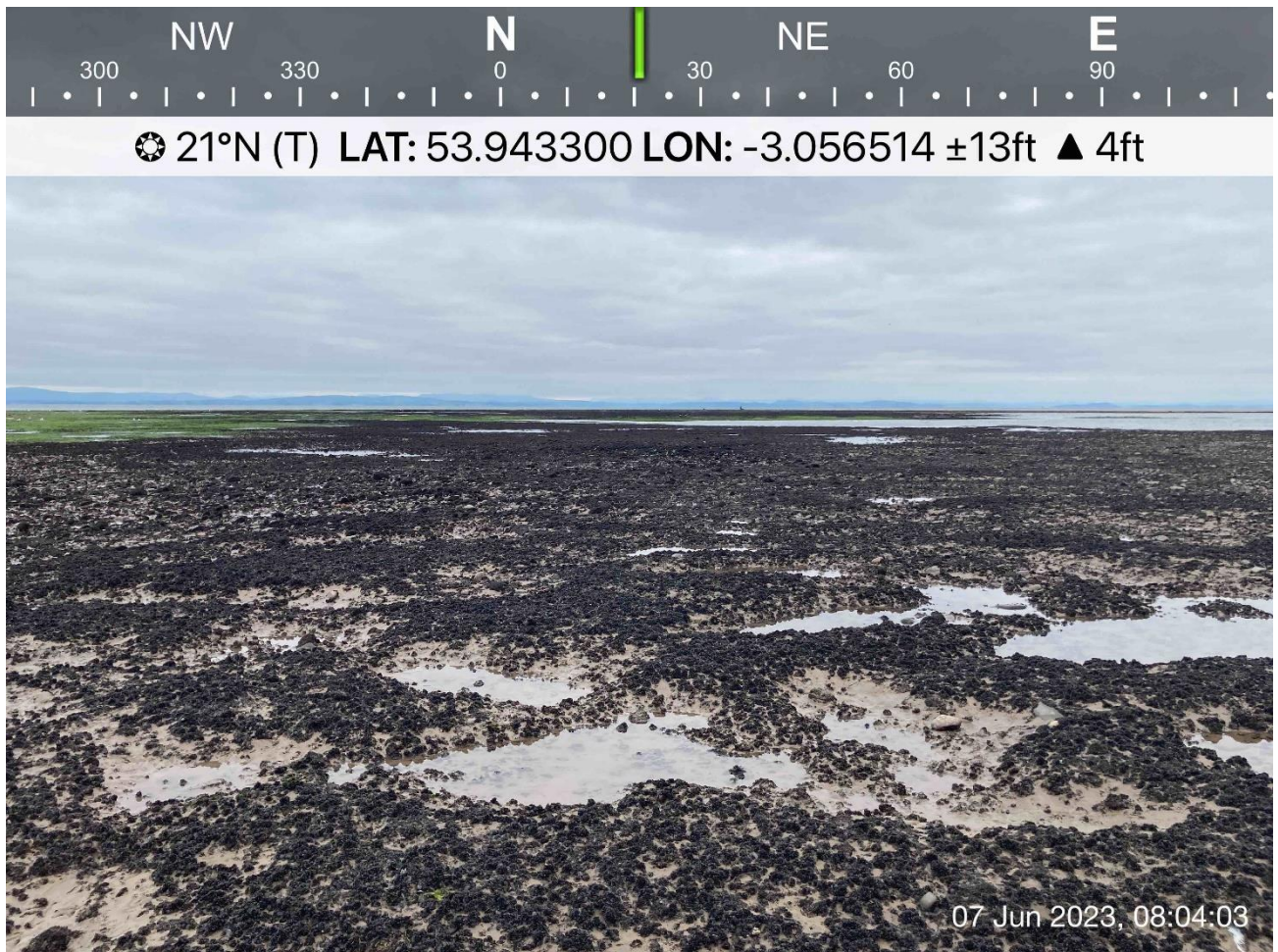


Figure 6. Kings Scar 2023 mussel settlement 07-06-2023.

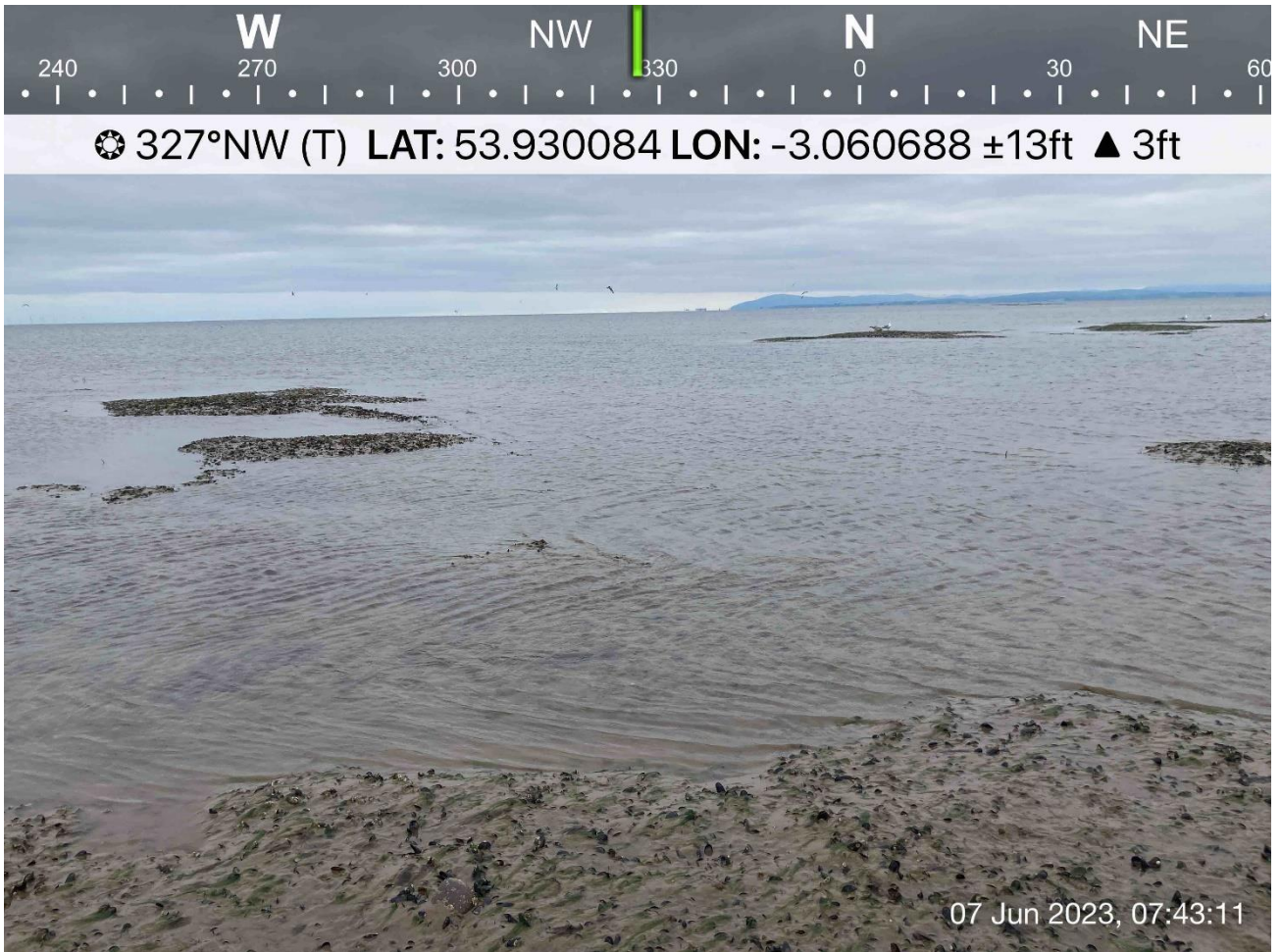


Figure 7: Neckings Scar 30-50mm, area sanding over 07-06-23.



Figure 8. Rossall Scar, mix of mussel and *Sabellaria alveolata* 07-06-23.