

Fleetwood Mussel Inspection 11-07-2023

Officers: AP, GG, AG

LW: 12:45 1.5m (Liverpool Tides)

The Fleetwood mussel beds of Perch and Black Scar were surveyed as these are the historically commercial beds Figure 1.

Black Scar

The 2023 mussel settlement on Black Scar is still present and has grown on to approximately 15 mm in size (Figure 2), with 80-90% coverage of the bed (Figure 3). The mussel has put down mud, which covers the extent of the bed, and in the centre has formed 'hillocks' (Figure 4). There is no evidence of scour currently, though the mussel is starting to loosen in patches. There is a small area on the south eastern side of the bed where there is exposed cobble, and a small area of size mussel along the channel edge. The approximate area of mussel is 5.4 ha.

Perch Scar

The 2023 mussel settlement on Perch Scar is still present and has grown on to approximately 15 mm (Figure 5). Coverage of mussel over the bed is 70-80% (Figure 7), with some of the mussel deeper in the mud likely due to strong winds during the survey. There was some evidence of scour near the lower end of the bed (Figure 6). Mussel mud has formed over the bed with hillocks forming and no exposed cobble or bare substrate (Figure 8). There were small patches of size mussel along the channel edge. The approximate area of the mussel was 4.1 hectares.

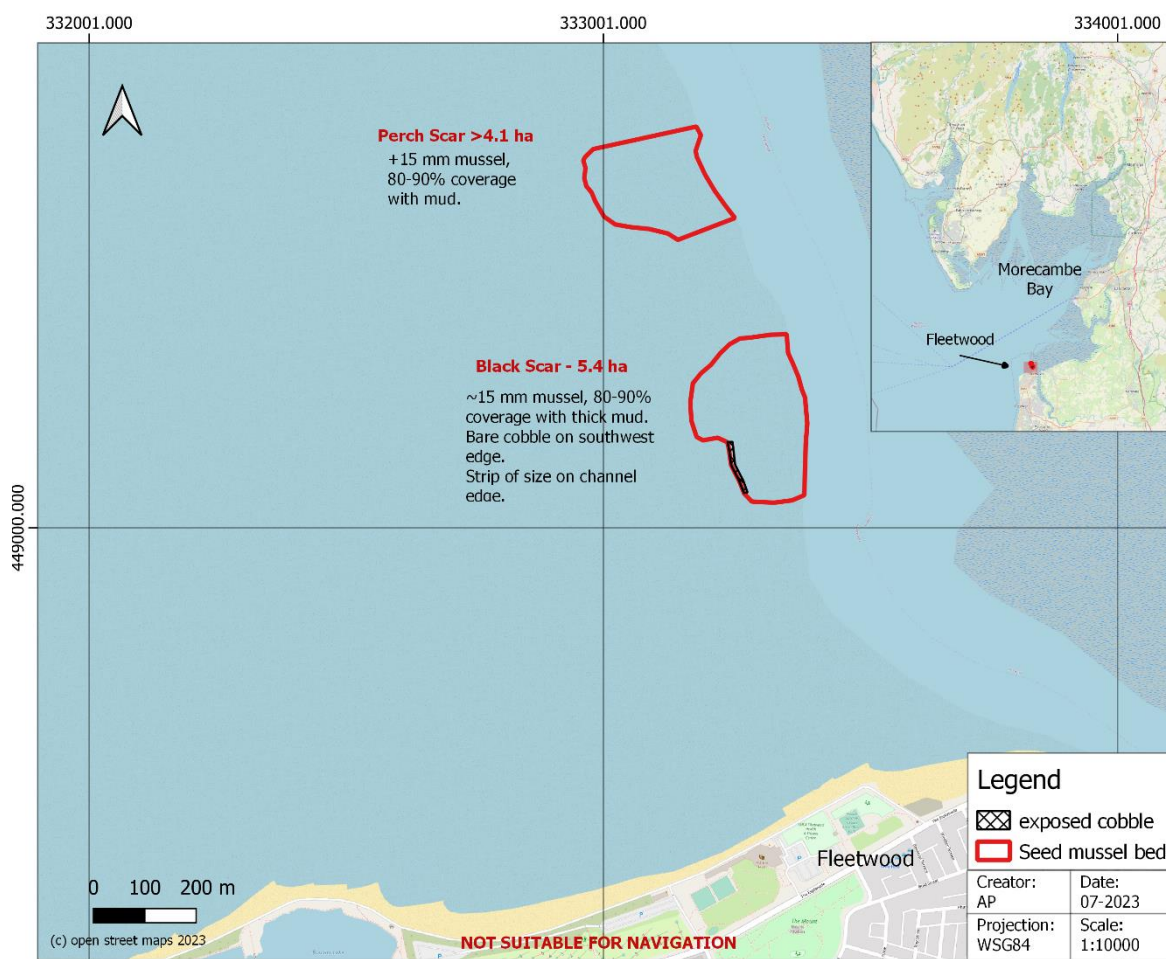


Figure 1. Overview of the mussel inspection 11-07-23.

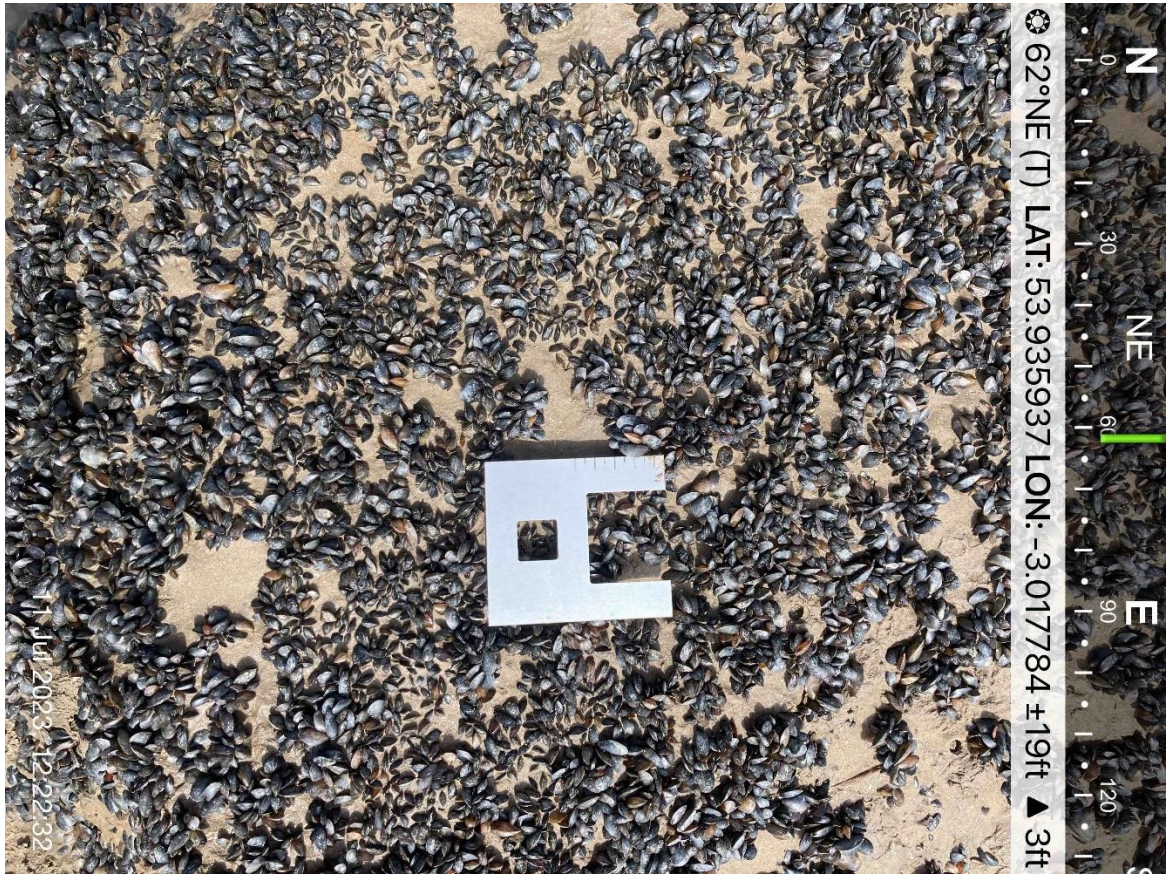


Figure 2. Black Scar ~15mm mussel.



Figure 3. Black Scar 2023 mussel settlement at 80 to 90% coverage 11-07-23.



Figure 4. Formation of mussel mud hillocks on Black Scar 11-07-23.



Figure 5. Perch Scar ~15mm mussel settlement 11-07-2023.



Figure 6: Perch Scar evidence of scour.



Figure 7: Perch Scar mussel coverage.



Figure 8. Perch Scar mussel mud and formation of mounds.