

Heysham Flat Mussel Inspection 19-06-23

Officers present: MC, GG
Tides LW 07:15 1.9m (Liverpool tides)

Officers inspected the mussel on Heysham Flat to assess if mussel was present and if seed mussel had grown on. Access to the outer skears was not possible across Dallam Dyke due to depth of water and timings.

The significant historic *Sabellaria alveolata* reef extending across the skewar from close to Conger Rock to Dallam Dyke seen in the previous survey in May was no longer visible. The *Sabellaria sp.* has been completely smothered by seed mussel and mussel mud, with only a few small sections now visible. The extent of the *Sabellaria alveolata* has been mapped from the previous survey on the 9th May 2023 (Figure 1).

The extensive seed settlement across the majority of the skewar has grown on in size, with the majority 10-15mm. The seed coverage over the entire skewar was predominantly 70-80%, with areas over 90%. The seed is putting down mussel mud and in places is very loose. There was evidence of scour in places.

Numerous bird species were present feeding in the area including oystercatchers and gulls.

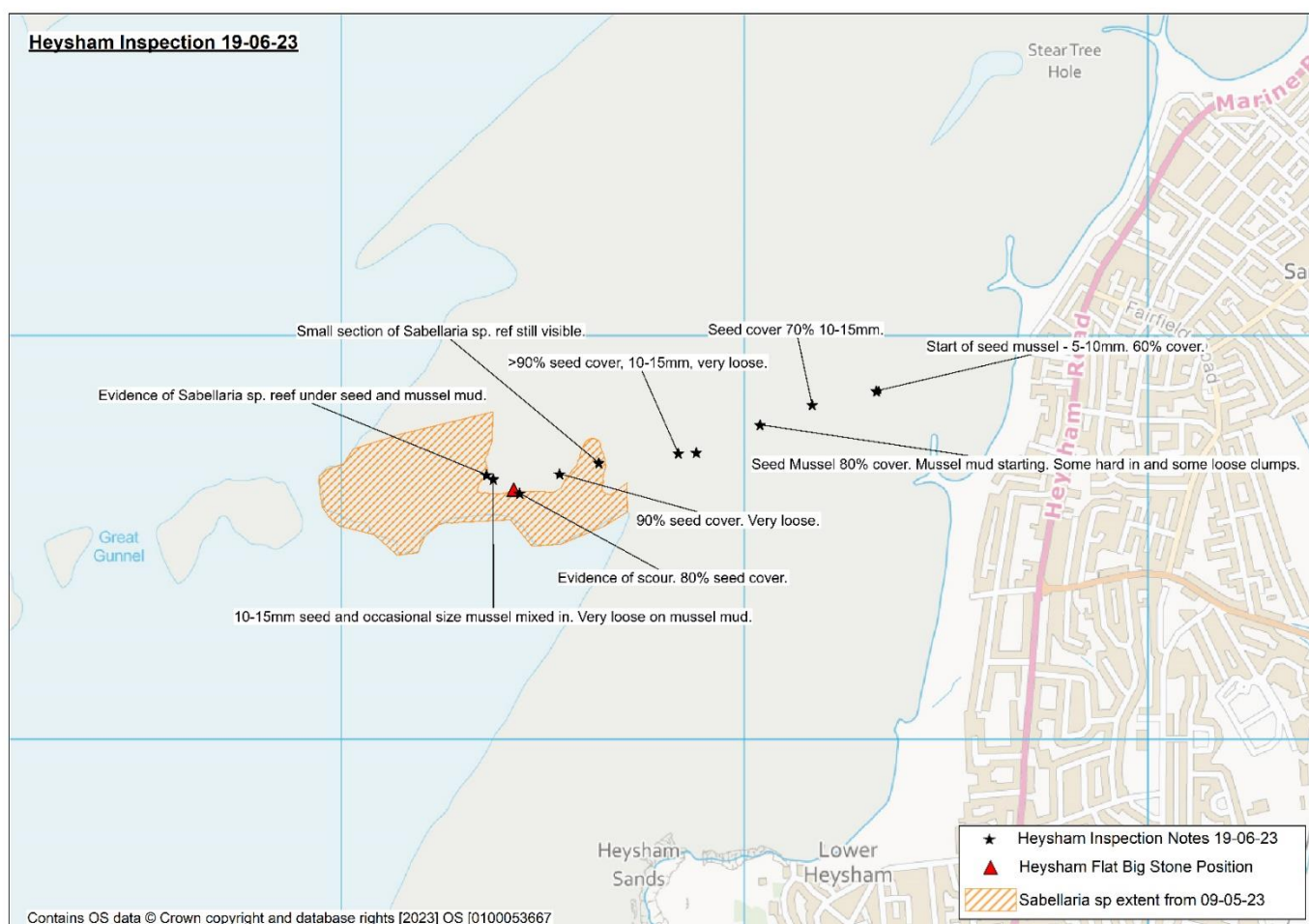


Figure 1. Map showing the extent of *Sabellaria sp.* on Heysham Flat survey 09-05-23 and survey notes from 19-06-23.



Figure 2. Mussel Seed coverage on Heysham Flat 19-06-23.



Figure 3. Mussel Seed 10-15mm Heysham Flat 19-06-23.



Figure 4. Evidence of scour and loose seed mussel Heysham Flat 19-06-23.

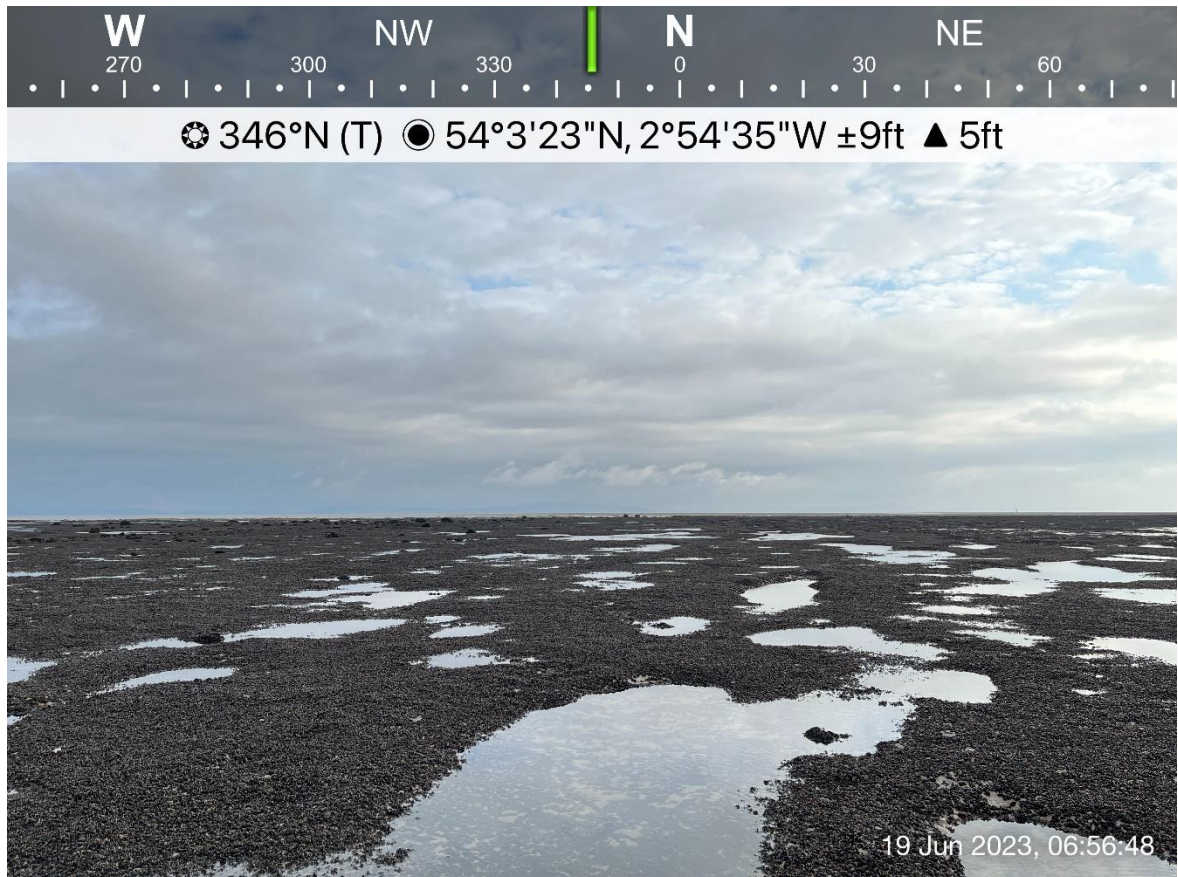


Figure 5. High coverage of loose seed mussel 19-06-23.

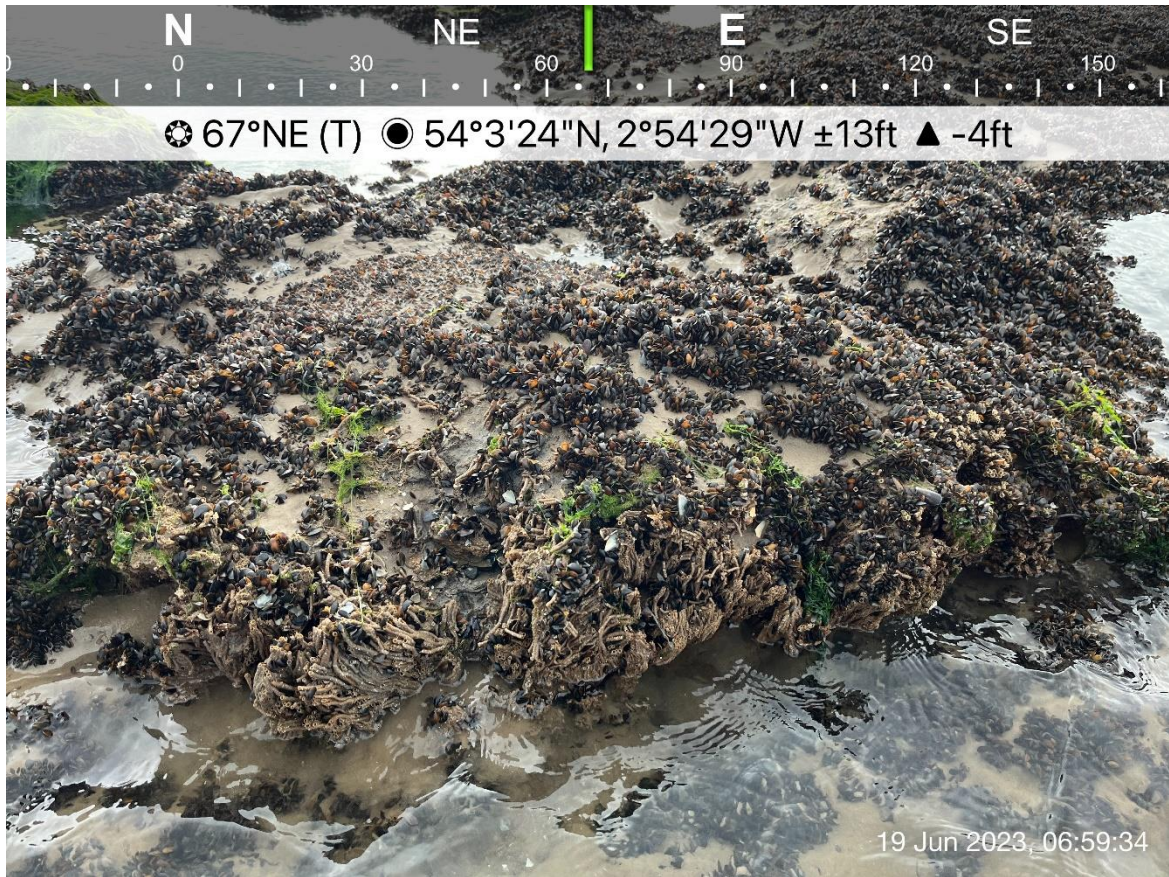


Figure 6. *Sabellaria* sp. and seed mussel Heysham Flat 19-06-23.