

Fourth Annual Report

April 2014 to March 2015



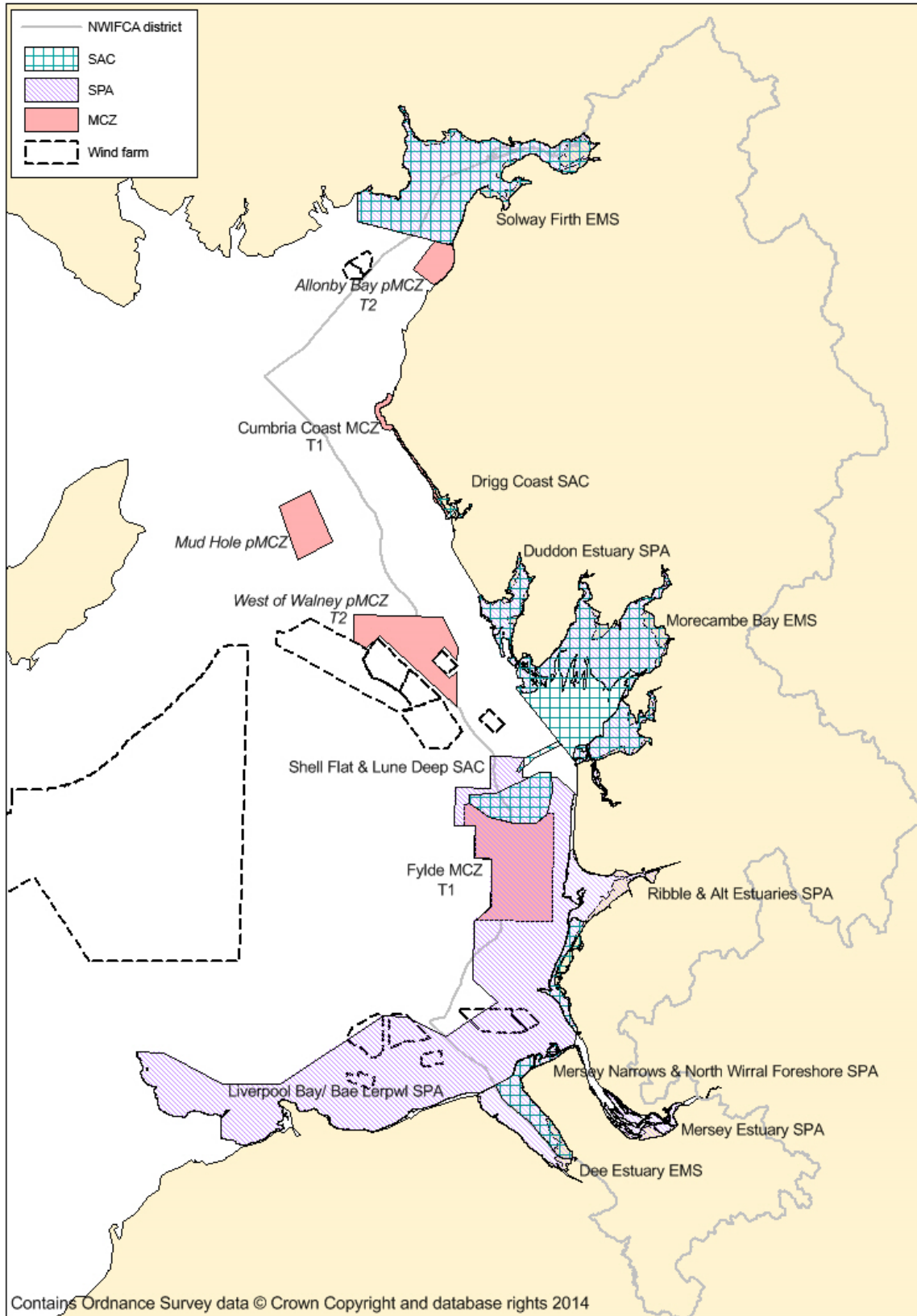
Contents	Page
District boundary showing marine protected areas & windfarms	2
District showing offices and vessels	3
Introduction and fishing summary	4
Resources	5
Performance against priorities	7
Annex 1 Meetings in 2014-15	10
Annex 2 Training audit	11
Annex 3 Asset list	12
Annex 4 List of Members	13
Annex 5 Patrol and Enforcement work	14
Annex 6 Science programme	15

Chairman's commendation

As County Councillor representing Cumbria, the largest Council in the NWIFCA District, it is a privilege to serve as Chairman. The 8 coastal councils of NW England need this Authority to protect the sea areas adjoining their land. This is why they provide the funding to make sure that the work of the NWIFCA which extends 6 miles from the shore and beyond continues effectively. One-third funding comes from Defra so that Government can be confident that national marine policy is also implemented in the North West. NWIFCA has environmental duties to prevent damage to marine protected areas and promote sustainable fisheries. Officers of the Authority patrol the coast daily to ensure fishing regulations are kept and stocks are not over exploited. Authority scientists survey fish stocks and marine biodiversity to assess the amount of fishing which is sustainable and the health of the marine environment. Fishing continues to be a significant industry in the NW which still provides direct employment for hundreds of people and indirect livelihoods estimated to be in the thousands.

It is the aim of all at this Authority to make sure that the fishing industry in the NW can prosper while the magnificent coastal landscapes, environment and biodiversity of the area continue to provide leisure and pleasure for all of who live in the area.

*Cllr Anthony J Markley
November 2015*



**Fig 1 NWIFCA District extends to landward borders of coastal Councils.
District includes large Marine Protected Areas and windfarms in coastal waters**

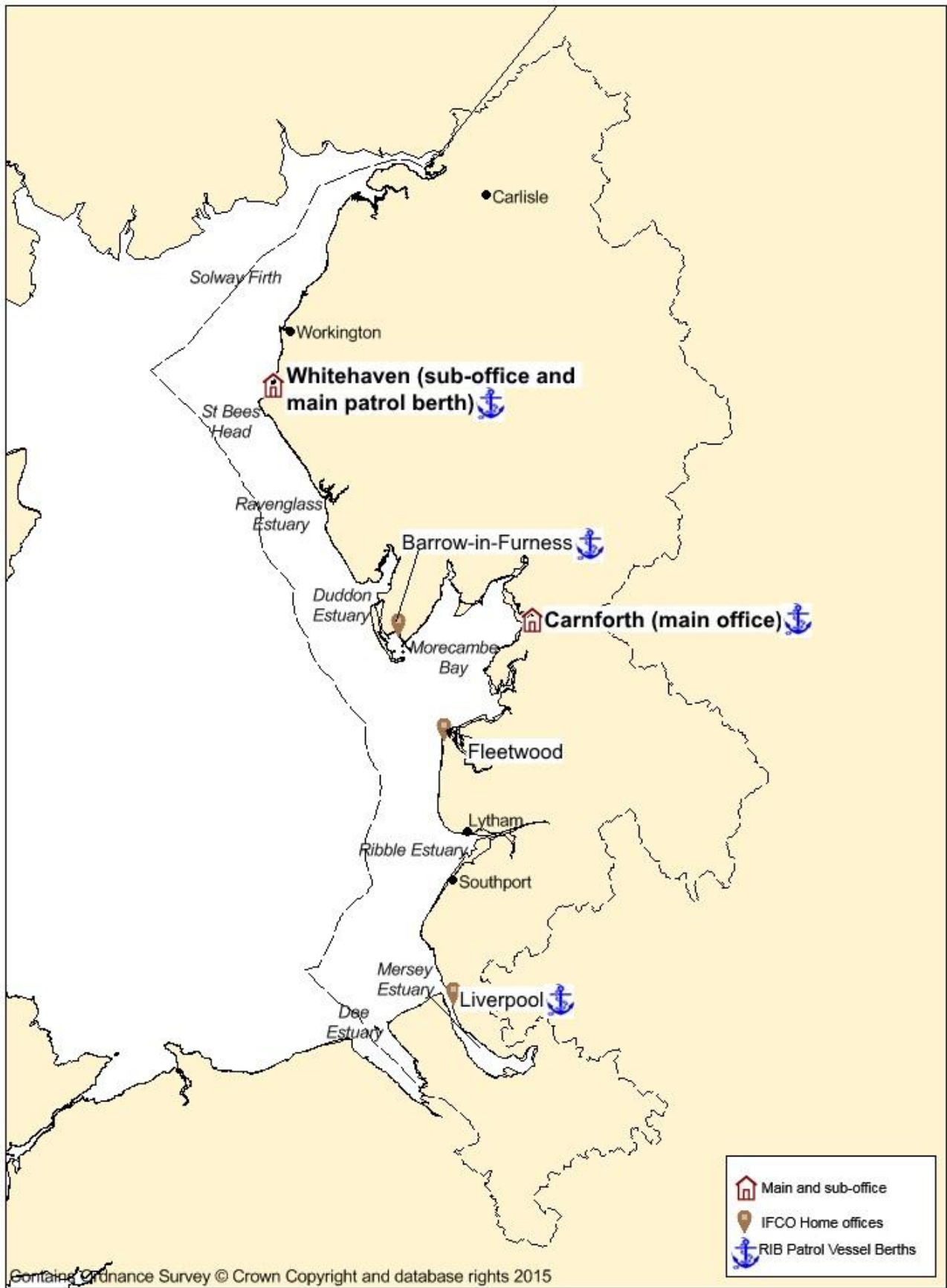


Fig 2 NWIFCA District showing offices and patrol vessel berths

Introduction and fishing summary

The NWIFCA is the lead Authority for conservation of the sea and the regulation of fishing in its District. The Authority has statutory duties in the Marine & Coastal Access Act (MACAA) 2009 for sustainable exploitation of sea fisheries and protection of the marine environment.

MACAA requires IFCA to publish by 1st April each year, an annual plan for the coming year and an annual report for the previous year in line with Defra guidance. NWIFCA plans, reports and constitution, are published at <http://www.nw-ifca.gov.uk/>. This Annual Report records progress against the objectives in the annual plan for 2014-15.

IFCA performance is assessed under a Defra monitoring framework of objectives, and performance indicators. Performance against these criteria is set out in this report.

The NWIFCA District is defined in SI 2200 and shown in Figs 1 and 2. It extends to the 6 mile line as shown from the baseline of coastal waters. The coastline contains important large estuaries: Solway Firth, Ribble Estuary, Mersey Estuary, Dee Estuary and Morecambe Bay. There is a relatively small length of open rocky coastline around St Bees Head in Cumbria. A wide range of habitats and species of conservation importance are represented in the District and many different types of fishing are practiced to a greater or lesser extent. Much of the District is designated as marine protected area under EU and UK legislation and there are some very large inshore wind farms.

Fishing activities: Marine protected areas and wind farms are increasing restricting fishing activities in the District. Around Cumbria, fishing for *Nephrops* (scampi / Dublin Bay prawn) continues to be the predominant activity. Prawn stocks may be holding up well, as a result of reduced finfish predation. Dover sole, brill and turbot, plaice, cod, codling, skate (thornback ray) are subsidiary fisheries. Intertidal fisheries for mussels predominate along with periwinkles, cockles, razor fish and significant crab, lobster and whelk fisheries.

In the southern part of the District, fin-fisheries and potting continue to be much reduced. The Dee cockle fishery was a beacon of productivity this year with cockles largely absent from the rest of the District. Small-scale musseling, shrimping, netting, angling and trawling for bass plaice, dab, fluke, whitebait, mullet and codling continue at the usual locations.

Angling, nets and lines are set from shores and piers. Hobby fishing from boats is increasing with angling, potting for lobster, crab and whelks and various types of netting all found. Bait (peeler crabs, lug, rag and other worms) is collected on many shores. Razor clams and other bivalves are collected from shores on the Wirral and Sefton coastline on the biggest tides by fishermen from as far south as the Midlands.

There were 168 over 10m and 95 under 10m licensed and registered vessels fishing within the District in 2014. These figures are obtained from the MMO website, combined with IFCA data collected when undertaking inspections of local and visiting vessels who regularly fish and land within the District. There are approximately 330 mostly small unlicensed/unregistered hobby fishing vessels.

Resources

The Local Authority Levy was increased by 2% in 2014-15 as last year for funding a replacement Patrol Vessel. Therefore, there was again a real terms reduction in core funding, equivalent to inflation. A summary of income and expenditure is shown in table 1. The Audited Annual Return with risk registers is available from the Clerk. The outturn for the year 2014-15 was well within budget. Staff changes and delays in recruitment resulting from other work pressures reduced staff costs. Reduction in income from Shellfish Sampling and Byelaw 3 Permit Fees was a result of decreased shellfish stocks across the district.

Table 1: BUDGET REVIEW FOR 2014-15			
Expenditure	Budgeted	Actual	Difference
	£	£	£
Employees	876,237	810,086	66,151
Premises	52,850	50,176	2,674
Transport	212,320	189,961	22,359
Vessel Purchase	73,280	0	73,280
Supplies/Services	61,300	49,832	11,468
Support Services	13,000	8,630	4,370
Authority & Audit	17,300	20,852	-3,552
Total Expenditure	1,306,287	1,129,535	176,752
INCOME			
Levy	1,187,287	1,187,287	0
Shellfish sampling	15,000	8,584	-6,416
Miscellaneous Income	0	3,500	3,500
Byelaw 3 Permit Fees	100,000	74,800	-25,200
Interest	4,000	6,434	2,434
Total Income	1,306,287	1,280,605	-25,682
		Total Surplus	151,070
		Less Vessel Purchase	73,280
		Working Surplus	77,790

Governance The Authority covers 8 Council Districts. It has 30 members comprising 10 Council members, (Lancashire and Cumbria have 2), 3 representatives of Government agencies and 17 general members appointed by MMO following a formal application and interview process. Councils and members are listed in Annex 4.

Staff, NWIFCA has 20 Officers. Fig 3 shows posts and line management. There was no change in numbers in 2014-15.

Assets are listed in Annex 3.

Offices are leased in Carnforth and Whitehaven and rented small industrial facilities used as base for local IFCO operations and storage of quads, ribs and equipment in Whitehaven, Barrow, Carnforth, Morecambe and Liverpool.

Main Patrol Vessel, FPV 'Solway Protector' is a 16m Arran hull with crew of 3-4 coded to 60 miles with a range of survey and enforcement equipment. Procurement of a replacement for 'Solway Protector' is underway. Lancashire County Council agreed in principle to undertake the tender exercise. In March 2015, the size, scope and cost of the vessel was still under consideration.

RIBS: based in Whitehaven, Barrow, Morecambe (zodiac) and Liverpool provide an effective inshore patrol service. All meet MCGA coding requirements.

Service standards The NWIFCA is committed to being transparent and accountable. Partners and stakeholders should know the level of service they can expect. Service standards, a Freedom of Information Act publication scheme and a complaints procedure are in the constitution. As a public sector body and an employer, the NWIFCA complies with Equality Act legislation and standards.

Enforcement The Authority aims to be an efficient and fair enforcer using a range of enforcement measures and sanctions within the framework of the **Compliance and Enforcement Strategy** and in compliance with the Regulators' Compliance Code, and Hampton Principles. The Strategy is available from the NWIFCA office or from the website. It was reviewed in March 2014.

Joint Working: NWIFCA delivers some regulation and enforcement jointly with Police, Marine Management Organisation (MMO), Gangmaster Licensing Agency (GLA), Councils, and Environment Agency (EA).

Some sample collection, data collection and science projects are done jointly with Natural England (NE), other IFCA, Cefas, Universities and consultants. NE provides essential data to inform assessments of fishing impacts.

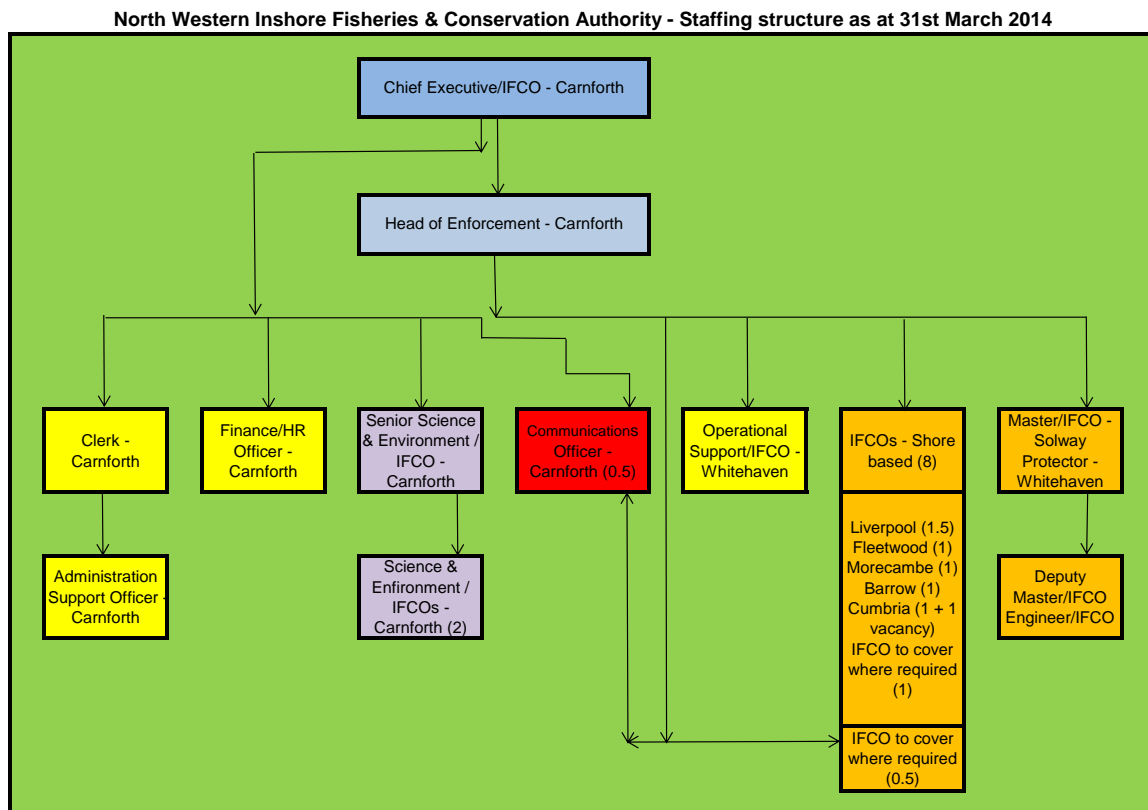


Figure 3 Staff resources and line management.

Performance against priorities

IFCA Vision:

To lead, champion and manage a sustainable marine environment and inshore fisheries in its District by successfully securing the right balance between social, environmental and economic benefits to ensure healthy seas, sustainable fisheries and a viable industry

Table 2: NWIFCA Performance against operational priorities for 2014-15 (see annual plan)		
	Priority	Progress and output
1.	<i>EMS: Protection of red risk sites completed by implementation of Byelaw 6.</i>	<i>Complete</i>
2.	<i>EMS: Amber priorities identified, data and research needs identified and work commenced</i>	<i>Work on schedule</i>
3.	<i>MCZ Tranche 1 sites: data needs and regulatory measures determined. Implementation commenced.</i>	<i>2 sites in the District designated by Defra and now under NWIFCA management.</i>
4.	<i>MCZ Tranche 2 sites: Implement emerging Defra work programme</i>	<i>Consultations on tranche 2 sites underway</i>
5.	<i>Byelaw review: Consider and if necessary implement changes needed to Byelaw 3. Continue development of Vessel length byelaw, Morecambe Bay Fishery Order, netting byelaw</i>	<i>Byelaw review ongoing. Generation of single regulations for the NWIFCA District is challenging. Various new byelaws under consideration.</i>
6.	<i>Implement tendering and ordering of new main patrol vessel</i>	<i>In progress with Lancashire County Council</i>
7.	<i>Enforcement: Continue development of shellfish enforcement with increased partnership working with other agencies</i>	<i>Enforcement team developing new approaches and gaining valuable experience. No outstanding negative issues to address</i>
8.	<i>Sustainability of fisheries: Continue working to develop Project Inshore report and Liverpool PhD student project</i>	<i>Both projects close to completion by end March 2015</i>

Table 3: Performance against Defra Success Criteria and Objectives		
Success criterion 1: The NWIFCA has sound governance; staff are motivated and respected.		
No.	Objective	Output
1a	Annual plan 2014-15 approved by NWIFCA and on website by April 2014	Complete.
1a	Annual Report for 2014-15 in prep.	Ongoing
	Comply with financial regulations and achieve a satisfactory report from internal and external Auditors	Complete
1c	Review Risk Management Strategy, Strategic and Operational Risk Registers for 2014-15 Audit.	Complete. Strategic and operational risk registers were reviewed in April 2014 and approved by auditors. See Audit report for risk register.
1d	Continue development of staff management	Complete and ongoing. Job plans and work

	system.	programmes were reviewed by line managers during the year.
1d	Review NWIFCA Health and Safety Policy quarterly and maintain officer H&S training	Complete and Ongoing. Policy reviewed for each quarterly meeting. Officers are trained at induction. A skills and training audit is under development. No reportable H&S incidents occurred in 2014-15.
1e	Maintain skills and training audit and identify gaps and needs analysis. Work with partners to establish joint training	Ongoing. Training Audit updated. Mandatory training is up to date. Officers attended MMO fisheries, courses and other personal development training.
1f	Officers and members have involvement in policy development.	Ongoing. Continuous open consultation on all issues takes place at and between meetings.
Success Criterion 2. Evidence based byelaws are used to manage sustainable exploitation		
2a	Issues affecting sustainable management are identified and management options considered.	Ongoing. Technical Science and Byelaw Sub-Committee determines fisheries management and byelaws including emergency byelaws.
2a	Byelaws meet the requirements of Defra guidance and information management is effective and secure	Complete and ongoing. All byelaws are scrutinised by MMO and Defra. Data and information is electronically stored securely on IT system operated by lake District National Park. Repeated scientific survey keeps data up to date
2a	Assessment of recreational fishing effort (including bait-digging)	Ongoing. New procedures and methods for recording of angling have been incorporated into IFCO patrols.
2b	All legacy byelaws under review to create new District wide IFCA byelaws	Ongoing. Good progress made but delayed by new EMS work setting regulatory priorities
2b	Review and replace Fixed Engines byelaws	Ongoing Byelaws reviewed in 2011 jointly with EA.
3. A fair, effective and proportionate enforcement regime in place		
3a	Maintain multi-agency joint enforcement committees.	Ongoing. Committees in place and convened as required for Southport, Lytham, Morecambe Bay and Duddon Estuary.
3a	Review, implement and publish on website an enforcement policy framework, and inspection code of conduct in compliance with Regulator's compliance code.	Complete and ongoing. Implementation of risk based enforcement continued. Prosecutions and statistics are reported in Section 5. Enforcement meets compliance code.
3a	Establish national enforcement standards. national peer review, and training under SLA between IFCA, MMO, EA, NE	Ongoing. New accredited IFCO training and standards in development.
3b	Ensure all officers are trained in the enforcement framework	Complete and ongoing. Officers are trained in house at induction and attend national IFCO training at intervals set out in NWIFCA training audit
4. NWIFCA works in partnership with stakeholders		
4a	Demonstrate that MoUs with key partners are being utilised	Ongoing. National MOU with MMO, NE, EA and Cefas in place. MMO, EA, NE and others contribute to work planning, reporting, daily operations and many projects.
4a	SLAs with lead Local Authority and key partners are agreed and adopted	Not progressed. No requirements identified. Extensive joint working ongoing.
4b	Update databases of stakeholders and contacts	Complete and ongoing
4b	Develop data sharing with partners	Complete and ongoing. Agreements in place to share data for science and enforcement in compliance with Data Protection Act. See 5b. Authority contributes to national programmes such as Medin.
4b	Develop and implement stakeholder	Complete and Ongoing. Public meetings,

	engagement strategy	consultations, text alerts, newsletters, website, press releases all done as required
4b	Regular publication of a newsletter (Also HLO 6b & 7b)	Complete and ongoing. 2-3 editions of newsletter per year.
4b	Website functioning review and update monthly.	Complete and ongoing.
4b	Publish and review Freedom of Information scheme.	Complete and ongoing.
5. The NWIFCA use best evidence to deliver objectives		
5a	Develop procedures, plans and records systems to demonstrate use of the best available, quality-assured evidence in all decision-making in compliance with national and EU legislation.	Complete and Ongoing. Documentation of all policies and decisions takes place through reports to Authority showing evidence used. Data held by the Authority is stored electronically and in reports.
5a	Annually publish a research plan showing links to partners' work	Complete and ongoing. See 2014-15 NWIFCA annual plan.
5a	Research reports are published on website.	Complete and ongoing. Science reports on website and reported to Defra, AIFCA, TAG
5b	As part of MoUs, agree and share research tasks, evidence gathering and data sharing	Complete and ongoing.
5b	Contribute to national and regional evidence networks	Complete and ongoing. NWIFCA contributes to research networks.
6. NWIFCA promotes sustainable management of the marine environment		
6a, c	Start review of fisheries and a sustainable management plan for North West England seas by: i) Identifying each agency's roles and duties, at local and national level; ii) Identifying shared objectives and overlapping responsibilities in managing the marine environment with partner organisations and how these impact on NWIFCA's objectives; iii) State shared objectives in Annual Plan iv) Ensuring delivery of WFD & MSFD objectives.	Ongoing. Project Inshore is ongoing. Partners' interests researched and noted in annual plans and reports. EMS, MCZ, WFD and MSFD contribute. Liverpool University PhD sponsorship continuing. i) Known ii) See annual plan iii) See annual plan iv) No objectives yet defined or in place
6b	Develop communications with coastal communities	Complete and ongoing. Communications strategy approved.
6c	Implement principles of the UK Marine Policy Statement and Marine planning	Complete and ongoing. MPS implemented in NW by compliance with objectives. MP not yet implemented in NW.
6d	Apply precautionary approach in management of all MPA.	Complete and ongoing. EMS and MCZ management include precautionary approach. All new activities subject to assessments as required.
6d	Representation on MPA management committees	Complete and ongoing. NWIFCA are represented on site management committees.
6d	Apply Government guidance on sustainable development	Complete and ongoing.
7. IFCAs are recognised and heard		
7a	SLAs with partner organisations agreed as required	Complete and ongoing. Agreements in place to jointly regulate shellfisheries, share intelligence and permit holder data.

7a	MoUs with key partners reviewed	Complete and Ongoing. National MOU with NE, MMO, EA Cefas agreed
7b	Officers trained to promote the aims and ethos of the Authority	Complete and ongoing through induction programmes and staff meetings
7b	Measures of behaviour in place to guide relations with the public and officers of partner organisations.	Complete and ongoing in Officer training, management and Communications Strategy.
7b	Contribute to the development of a national framework for monitoring and evaluation	Not yet been initiated
7b	Conduct inventory of all assets and equipment	Complete and ongoing. Reviewed in 201-14.

Annex 1: Meetings 1st April 2014 to 31st March 2015

Chairman's Sub-Committee	16.04.14	Glasson Dock
Vessel Sub-Committee	28.04.14	Carnforth Office
TSB Sub-Committee	02.05.14	Carnforth Office
Chairman's Sub-Committee	02.05.14	Carnforth Office
Chairman's Sub-Committee	27.05.14	Carnforth Office
Chairman's Sub-Committee	13.06.14	Morecambe Town Hall
NWIFCA Quarterly (Annual) meeting	13.06.14	Morecambe Town Hall
Members' Training Day	17.07.14	Whitehaven Office
Chairman's Sub-Committee	25.07.14	Carnforth Office
Vessel Sub-Committee	25.07.14	Carnforth Office
TSB Sub-Committee	15.08.14	Carnforth Office
Chairman's Sub-Committee	15.09.14	Carnforth Office
Vessel and Finance Committees	15.09.14	Carnforth Office
NWIFCA Quarterly meeting	19.09.14	Morecambe Town Hall
TSB Sub-Committee (Special Meeting)	13.10.14	Carnforth Office
Finance Sub-Committee	12.12.14	LDNP Office, Kendal
NWIFCA Quarterly meeting	12.12.14	LDNP Office, Kendal
TSB Sub-Committee	16.12.14	Carnforth Office
TSB Sub-Committee	10.02.15	Carnforth Office
Chairman's Sub-Committee	13.03.15	Morecambe Town Hall
NWIFCA Quarterly Meeting	13.03.15	Morecambe Town Hall

Annex 2. Training Audit 2014-5

Mandatory job specific and personal development courses	Required for	Number in 2014-15
Sea Survival	All IFCOs and Science	JS
First Aid	All IFCOs and Science	JS
Quad bike use	All IFCOs and Science	JS
IFCO training (Torquay)	IFCOs	JS
GIS	Science	
Fire fighting	All IFCOs	JS
ML5	All IFCOs and Science	ET HT
RYA – Powerboat level II	All IFCOs	JS
PPR	All IFCOs	JS
SRC – radio	All IFCOs	JS
Level II – Conflict resolution	All IFCOs	JS TA AD SB SW PC JM CD HT AF ET AB
Habitats Regs Assessment	Science	ST AL
Regulatory Impact Assessments	Science	ST
EUNIS habitat classification	Science	MK AL
Data protection, FOI, EIR	Science	MK AD IA CD SA JM
Coastal Futures		ST

Annex 3 Office, vessel and vehicle asset register

NWIFCA Assets	Ownership	Start/purchase date	Description and Use
Carnforth Office	Leasehold	2008	Main Office 10 officers
Whitehaven Office	Leasehold	1991	Sub Office 6 Officers
Whitehaven workshop	Leased	2005	1 RIB 2 Quad boat and vehicle repairs
Barrow garage store	Leased	November 2012	1 Rib 1 Quad
Morecambe workshop	Leased	July 1989	1 Zodiac, 1 quad
Liverpool garage store	Leased	March 2011	1 Rib 2 quads
Solway protector	Owned	1989/1990	Enforcement, conservation, survey work throughout the District, and beyond
Ribs:			
Bay Protector 7.3m RIB	Owned	2014	Ribble to Dee estuaries
Zodiac Bravo 5.4 m	Owned	1994	Morecambe Bay and Ribble
Protector Gamma 6.3m RIB	Owned	2011	Mainly Barrow Other areas when required
Protector Bravo 7m RIB	Owned	1999	Mainly Whitehaven other areas when required
ATVs	10 Owned	Jan 2011 – 2014	Enforcement, science, survey, on foreshores throughout district
Vehicles:			
Landrover Defender 90	Owned	July 2009	Morecambe based enforcement officer
Landrover Defender 90	Owned	November 2009	Liverpool based enforcement officer
Renault Traffic SL27	Owned	January 2010	Fleetwood based officer
Renault Kangoo ML19	Owned	March 2011	Science Team throughout the District
Renault Kangoo Maxi crew	Owned	June 2011	Science Team throughout the District
Renault Kangoo ML 19	Owned	January 2013	Carnforth based enforcement team – used throughout the District
Nissan Navara 2.5	Owned	March 2014	Cumbrian based officers throughout District
Nissan Navara 2.5	Owned	March 2015	Cumbrian based officers throughout District

Annex 4 :Members and affiliations 2014-15

Appointing Authority	Appointee at 31 st March 2015	Previous members at 1 st April 2014 & date left
Blackpool Borough Council (1)	Cllr G. Coleman	
Cheshire West and Chester Council (1)	Cllr M. Byram	
Cumbria County Council (2)	Cllr A. J. Markley Cllr K. Little	
Halton Borough Council (1)	Cllr R. Hignett	
Lancashire County Council (2)	Cllr L. Beavers Cllr K. Brown	
Liverpool City Council (1)		Cllr T. Beaumont 14/11/14
Sefton Council (1)	Cllr. J. J. Kelly	
Wirral Council (1)	Cllr B. Mooney	Cllr P. Glasman 5/14
Natural England	Chris Lumb	
Environment Agency	Stewart Mounsey	Bill Darbyshire
Marine Management Organisation	Andy Newlands	Richard Littleton (5/2/15)
MMO Appointees and their Affiliations:		
Marine Environment/Science	Dr E. Baxter Mr C. Booth Dr J. A. Clark Mr D. Harpley Ms C. Salthouse Ms P. Taylor	Prof C. Frid (1/1/15)
Anglers and Recreational Fishing	Mr B. Crawford Dr P. Williams Mr B. Leigh	Mr D. Dobson (28/7/14)
Commercial Fishing/Aquaculture	Mr R. Benson Mr D. Clarke Mr R. Graham Mr D. Grunshaw Mr T. Jones Mr S. J. Manning Mr K. Thompson	Mrs J. Butler (11/8/14) Mrs M. Owen (11/11/14) Mr C. Woods (8/8/14)

Annex 5 Patrol and enforcement work 2014-15

All Patrols shore and vessel totals (including Solway Protector)			
Category	Measure	Description	Number
At sea	No. vessel patrols	number of patrols (all vessels, mother/daughter =1)	96
	No. boardings	number of boardings/inspections of any vessels at sea (includes kayaks, dive boats, angling and commercial boats)	30
	No. gear inspections	number of inspections of fishing gear deployed in sea	96
On land	No. shore patrols)	person days any length all purposes, all locations. Includes visits to 490 ports and other landing points	1078
	No. port visits	Includes multiple inspections and port visits on shore patrols	634
	No. premises inspected	Includes shops, wholesalers, stalls, markets, auctions.	35
	No. landing inspections	landings from a vessel inspected first hand on initial landing	97
	No. other inspections	Including vessel & gear in port, divers, shore anglers, beach inspections, vehicles, lorries etc	1727
Outcomes	No. verbal warnings	includes verbal rebriefs	71
	No. written warnings	includes gear offence and seizure notices issued at sea	8
	case files generated	Includes those where a legal sanction is expected	3
	formal cautions offered and accepted	may be more than the number of case files if there are multiple offenders within a case	0
	No FAPs offered and accepted	may be more than the case files if there are multiple offenders within a case	1
	No. individuals prosecuted in court	this may be more than the number of case files if there are multiple offenders within a case)	3

Solway Protector only 2014-15	Total	
No. patrols and passages	43	
Total distance covered (miles)	2122	
Seatime (hours)	283.23	
Fuel used (gallons)	5649	
Total identified sightings:	376	
Local vessels	196	
Visiting vessels	180	
Types of fishing vessels seen:	<45'	>45'
Trawlers	98	68
Twin Rig Trawlers	0	100
Shrimpers	4	0
Potting Boats	39	0
Scallop Dredgers	2	0
Netters	2	0
Anglers	63	0
Total:	208	168

Annex 6: Science: Projects and survey programme

Projects

<u>Project</u>	<u>Location</u>	<u>Partners/Collaborators</u>	
Bivalve Mollusc Working Group	Morecambe Bay Mussel Management	Industry, Natural England, wildlife Trust, RSPB	
Colonisation of new Sea Defences	Rossall, Fleetwood	Blackpool & the Fylde College, Wyre Borough Council	
Defra Review of Fisheries Management in EMS	All EMS	Natural England, MMO, Defra	Ongoing
MCZ Tranche Two consultations	District-wide	Defra, MMO, Natural England, fishing industry	Ongoing
Razor Clam Fisheries Development Trial of Electro Gear	Liverpool Bay and West of Walney Island	Cefas Fisheries Science Partnership Project	
NWIFCA Biosecurity Plan	District-wide	Solway Firth Partnership, Natural England, Cumbria Wildlife Trust, Eastern IFCA	Published and ongoing recording
National Grid Coast Connections Project	Morecambe Bay and Cumbria Coast	Engagement with the planning process to ensure fisheries and marine interest fully represented	Ongoing
West Cumbria Tidal Lagoon	West Cumbria		Ongoing
Solway Energy Gateway	Solway Firth		Ongoing
Byelaw Review	District-wide	MMO	Ongoing
Wildlife Trust Marine Trainees Partnership	Morecambe Bay mainly	Cumbria Wildlife Trust	Ongoing

Surveys/Inspections

<u>Surveys/Inspections</u>	<u>Species</u>	<u>Bed</u>	<u>Area</u>	<u>Opened Y/N</u>	<u>Partners/'Consultees</u>	<u>Dates</u>
Stock	Mussels	Hardacre	Duddon Estuary	Y	Natural Trust	17/07/14
Stock	Mussels	South America/Falklands	Morecambe Bay	Y	Industry	01/04/14, 17/05/14, 14/07/14, 15/07/14, 13/08/14, 10/10/14
Stock	Mussels	Heysham Flat	Morecambe Bay	Y	Cumbria Wildlife Trust	16/07/14, 11/08/14,

						26/08/14
Stock	Mussels	Hilbre Island	Dee Estuary	N		02/04/14
Stock	Mussels	West Kirby	Dee Estuary	N		02/04/14, 17/07/14
Stock	Mussels	Black Scar	Fleetwood	N		29/07/14
Stock	Mussels	Perch Scar	Fleetwood	Y		29/07/14
Stock	Mussels	King Scar	Fleetwood	N		29/07/14
Stock	Mussels	Neckings	Fleetwood	N		29/07/14
Stock	Mussels	Rossall Scar	Fleetwood	N		29/07/14
Stock	Mussels	Foulney	Morecambe Bay	Y		16/07/14, 11/09/14, 07/01/15, 23/01/15
Stock	Mussels	Ellisons	Solway Firth	N		14/06/14
Stock	Mussels	Low Hagstock	Solway Firth	N		14/06/14
Stock	Mussels	Silloth	Solway Firth	N	Industry	27/08/14
Stock	Mussels	Seafield Road	Ribble Estuary	Y	Industry	26/03/15
Stock	Mussels	Bare Ayre	Morecambe Bay	N		03/06/14
Stock	Cockles	Beckfoot Flats	Solway Firth	N	Marine Scotland/Industry	9/10/14
Stock	Cockles	Middle Bank	Solway Firth	N	Marine Scotland/Industry	09/10/14
Stock	Cockles	Newbiggin	Morecambe Bay	N		02/12/14
Stock	Cockles	Leasowe	Wirral	N		14/07/14
Stock	Cockles	Flookburgh	Morecambe Bay	N		18/05/14
Effort Level	Bivalves	Leasowe unregulated	Wirral	Occasional		16/05/14, 14/07/14
Effort Level	Bivalves	Duddon Estuary	Cumbria	Occasional		
Condition Distribution	Sabellaria alveolata	Heysham Flat	Morecambe Bay	n/a	Cumbria Wildlife Trust	29/04/14, 15/07/14, 23/03/15
Cumbria Distribution	Sabellaria alveolata	AllonbyBay p.MCZ	Cumbria	n/a		24/03/15
Familiarisation			Cumbria Coast MCZ	n/a		14/05/14
Familiarisation	Winkles	Drigg	Drigg Coast SAC	Ongoing		12/07/14
Familiarisation	Crab tiling	Ravenglass		Ongoing		14/07/14