

Thurstaston Mussel Inspection 23-05-23

Officers present: MC, JH

Low Water: 08:44 2m (Liverpool Tides)

Officers walked one side of the perimeter of the mussel, and bed extent was seen to be similar to the 2022 inspection and mapped as such. Soft ground prevented a full perimeter being taken. However, changes in ground conditions did allow officers to walk further along the bed at the Northern extent and identify patches of mussel not previously inspected. Bed Area from the 2022 inspection and notes from this inspection have been mapped in figure 1.

The Thurstaston bed is made of up one large bed area and a number of smaller areas separated by channels. The main bed area, of a similar size and shape to that shown in figure 1 from 2022, has approximately 20% coverage of patchy, barnacled mussel between 35-40mm, with some occasional size mixed in. To the West of the main bed area a number of mussel patches were discovered along both sides of a channel edge. These ranged in size as described in figure 1, with bare patches of substrate between them. These patches contained cleaner size mussel up to 60mm. Other mussel patches of undersize mussel were located to the North-East of the main bed area, at lower coverages. No other spat settlement was observed. Oystercatcher were present in large numbers.

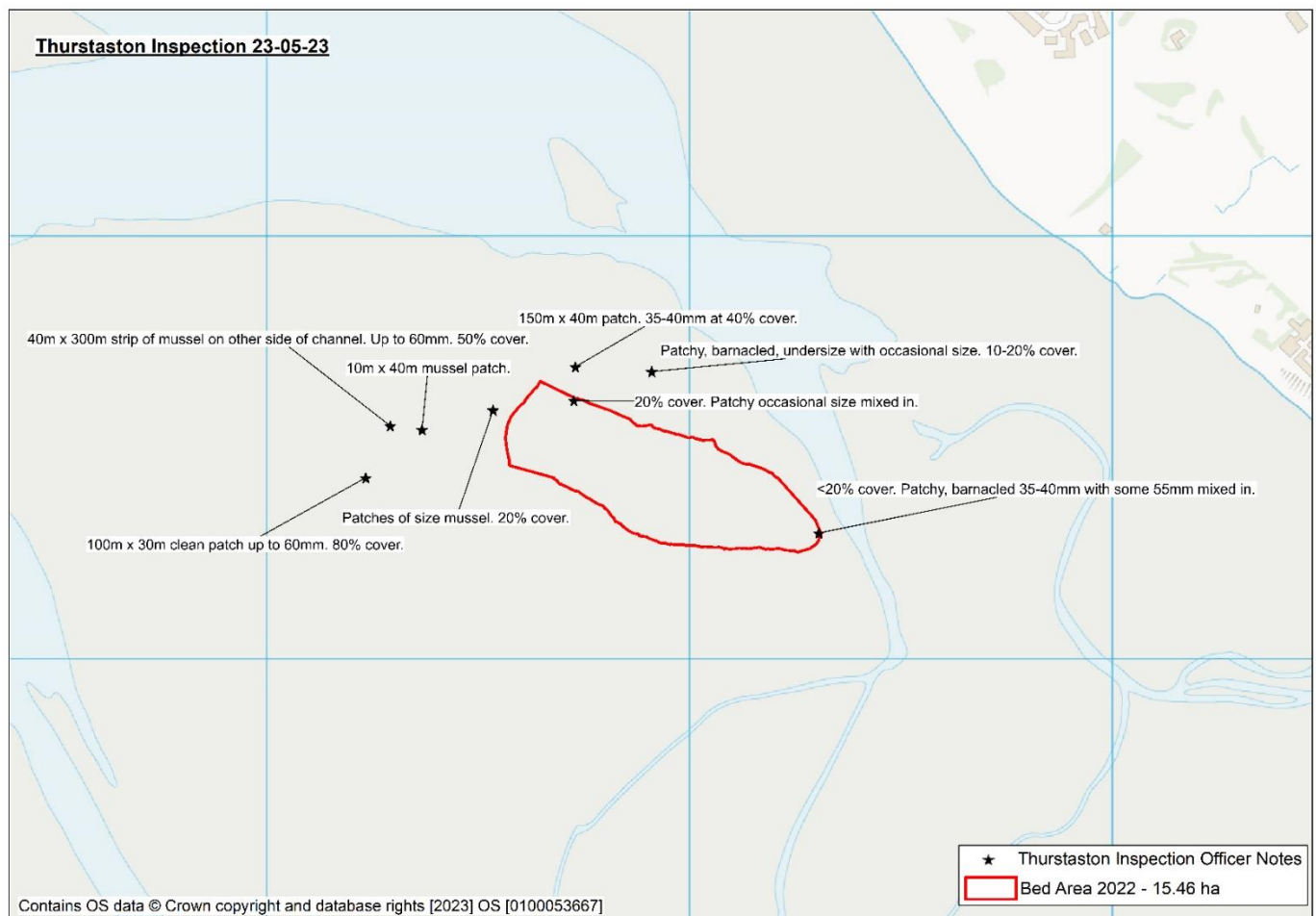


Figure 1. Map showing the area of Thurstaston mussel beds and observations of officers on 23-05-23.

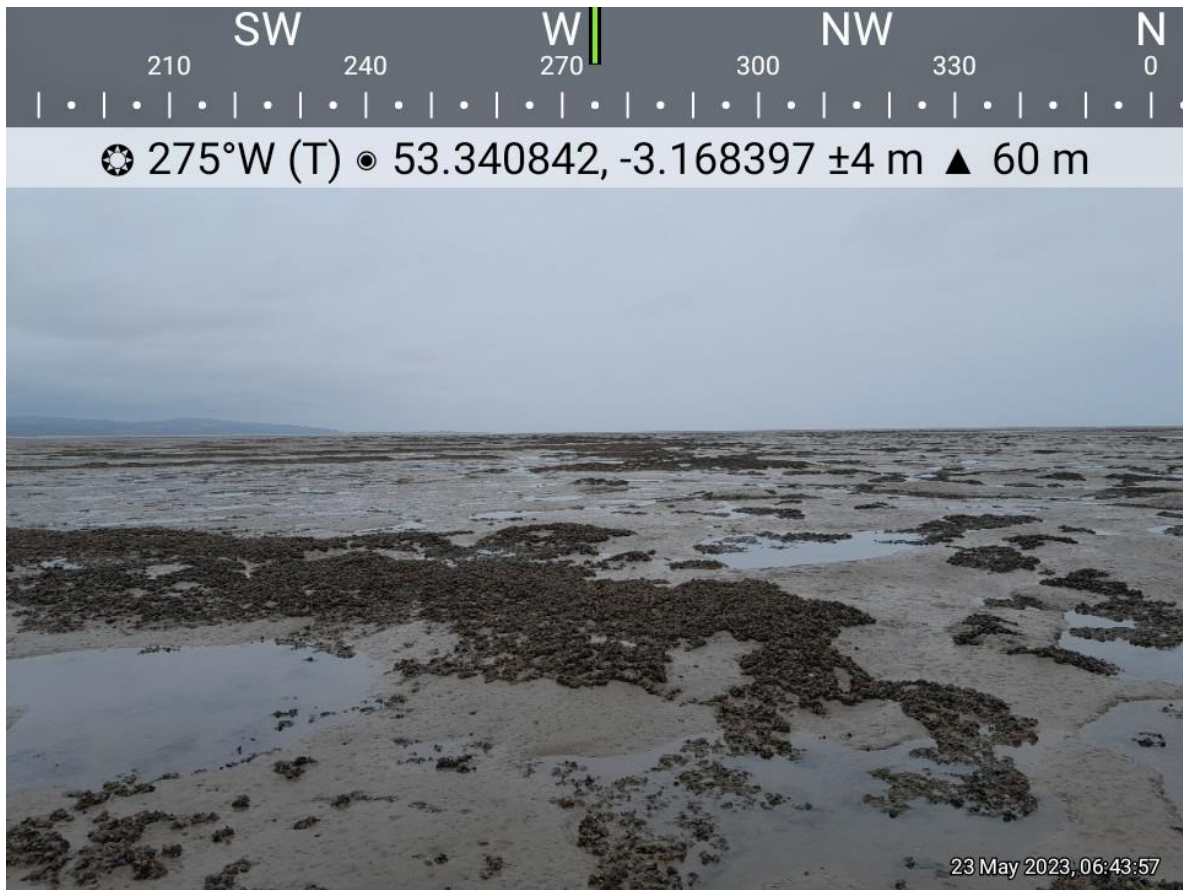


Figure 2. Thurstaston Mussel Bed 23-05-23.



Figure 3. Mussel on Thurstaston bed 23-05-23.



Figure 4: Thurstaston Mussel Bed 23-05-23.



Figure 5: Mussel patch Thurstaston 23-05-23.



Figure 6: Mussel on other side of channel at Thurstaston 23-05-23.