

## West Kirby Mussel Inspection 23-05-23

Officers present: GG, AP

Low Water: 08:44 2m (Liverpool Tides)

Officers were able to walk the perimeter of the mussel bed which covered 6.8 hectares, this is 0.7 hectares smaller than when the perimeter was last walked in July 2021. Figure 1 shows the map of the bed.

The bed area had 40-50% coverage of mussels across the main extent (Figure 2). The mussel was uniform in size with the majority of the mussel between 45-60mm meaning it had remained and grown on since the previous winter (Figure 3). No spat settlement was observed. The substrate of the bed was thick mud, over half a metre deep in the central part of the bed, and the mussel present was partly buried (Figure 4). There was little evidence of scouring, and the mussel remained in similar condition to the previous year. There were large areas of barnacled mussels and a large presence of cockle shell amongst the mussel (Figure 5). A patch of sand mason worms was found on the bed (Figure 6).

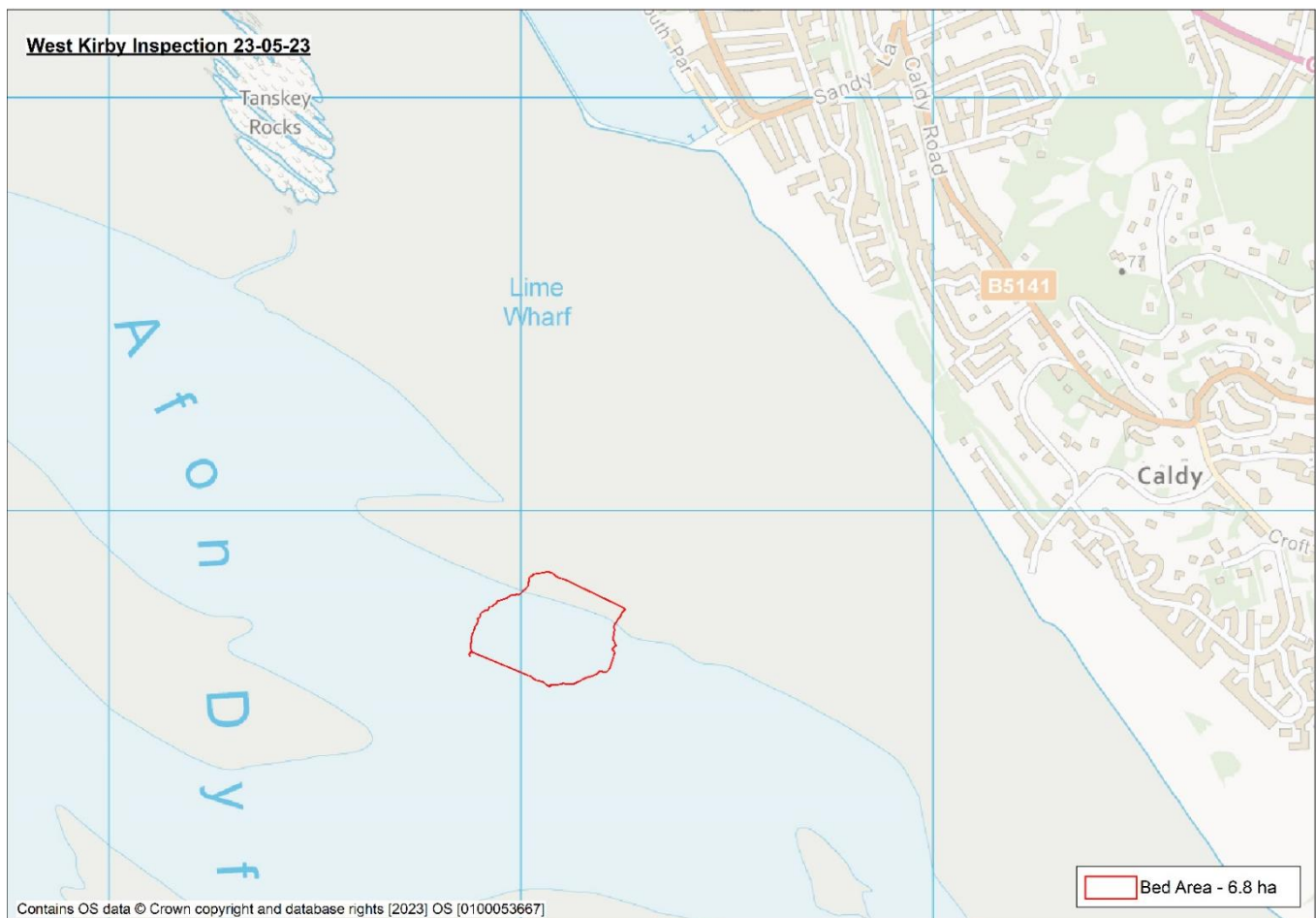


Figure 1. Map showing the area of West Kirby mussel bed on 23-05-23.



Figure 2. West Kirby Mussel Bed 23-05-23.



Figure 3. Size Mussel Patch West Kirby 23-05-23.



Figure 4. Mussel patch West Kirby 23-05-23



Figure 5. Barnacled Mussels West Kirby 23-05-23

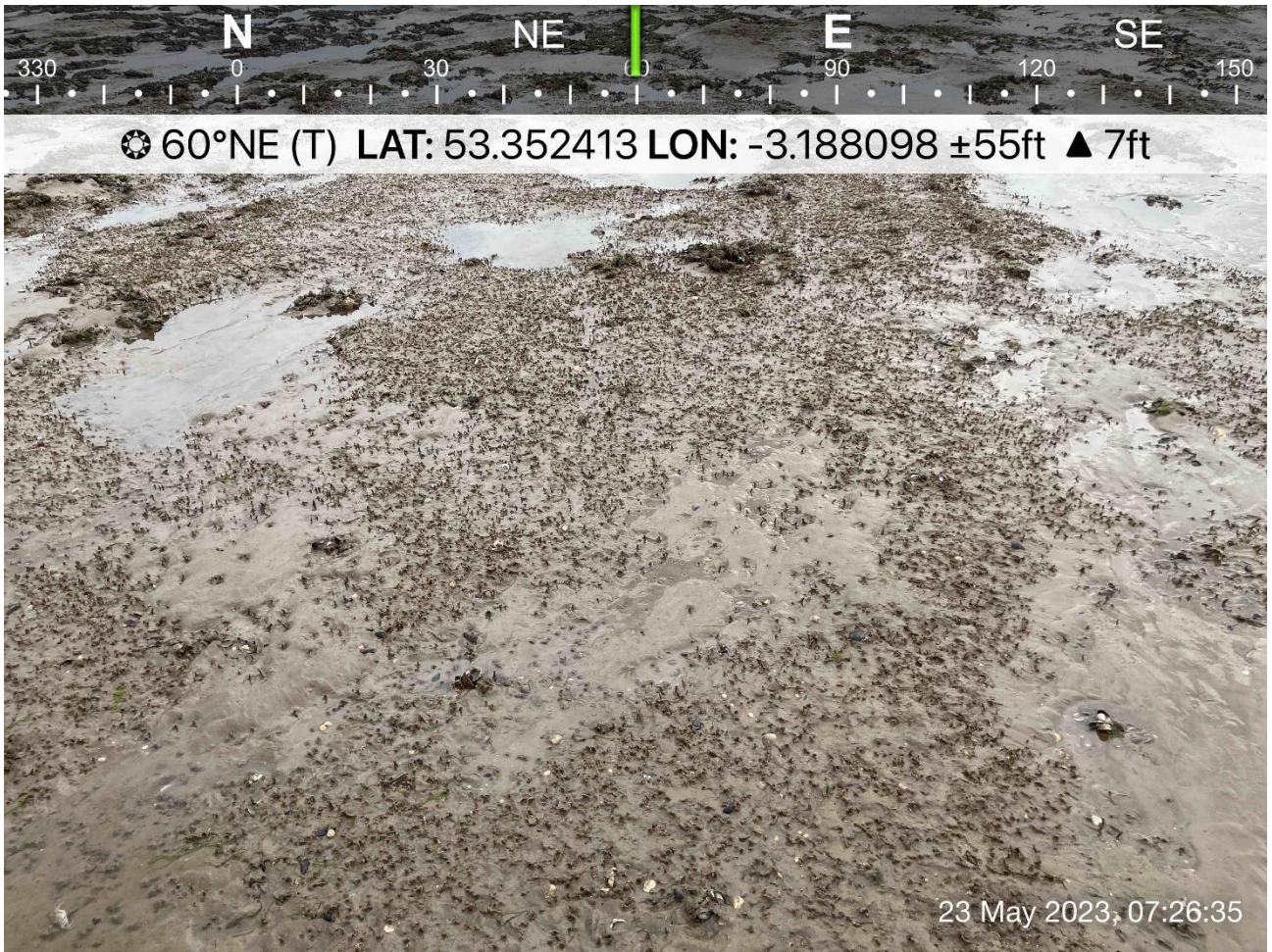


Figure 6. Sand Mason Worms at West Kirby 23-05-23