

Wyre End Mussel Inspection 06-06-23

Officers present: MC, JH
Tides LW 07:59 (1.4m) (Liverpool tides)

An inspection of Wyre End and channel areas of mussel was completed. The area of the main skear and patches of mussel on the channel edge were mapped to determine areas shown in Figure 1. Observations of mussel and substrate were made across the skear and channel edge areas (Figure 2). There has been a 2023 settlement of seed mussel, varying in density across the main skear. An area of raised cobble/pebble was observed running along the Eastern section of the surveyed area, which was predominantly bare, with some small patches of seed. Eider were observed on the bed.

Seed coverage over the majority of the bed was high, at approximately 80%, and in areas was beginning to put down mussel mud. Some areas had lower patchy density of around 40-50% cover on the channel side. Seed was observed of two different size classes of 5-8mm and 8-12mm. No larger or size mussel had persisted from last year, with only occasional size mixed in with the seed on the channel edge.

The two channel edge areas had seed coverage of 70-80% cover, but the channel edge was not fully visible due to tide constraints.

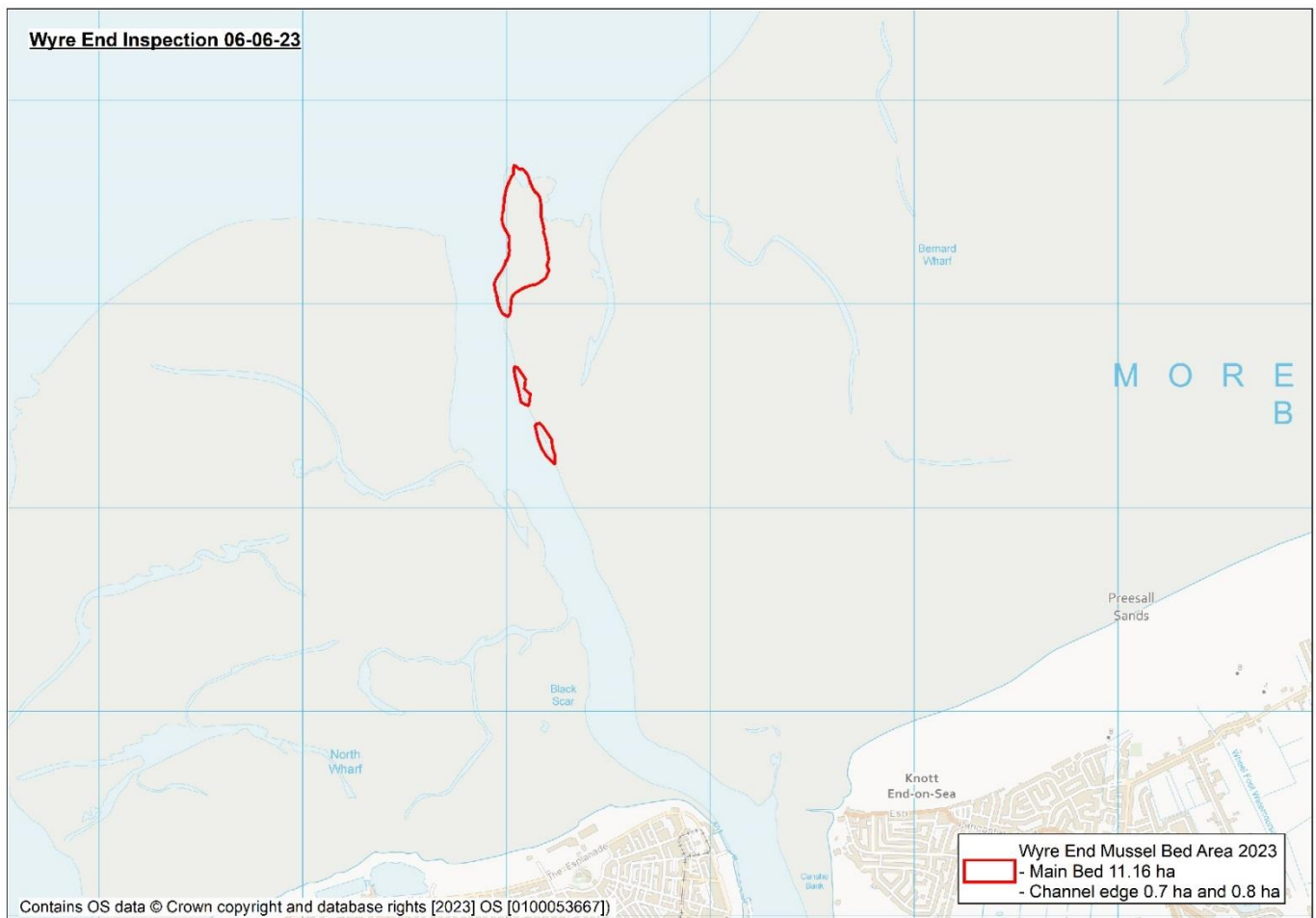


Figure 1. Approximate bed area boundaries 06-06-23.

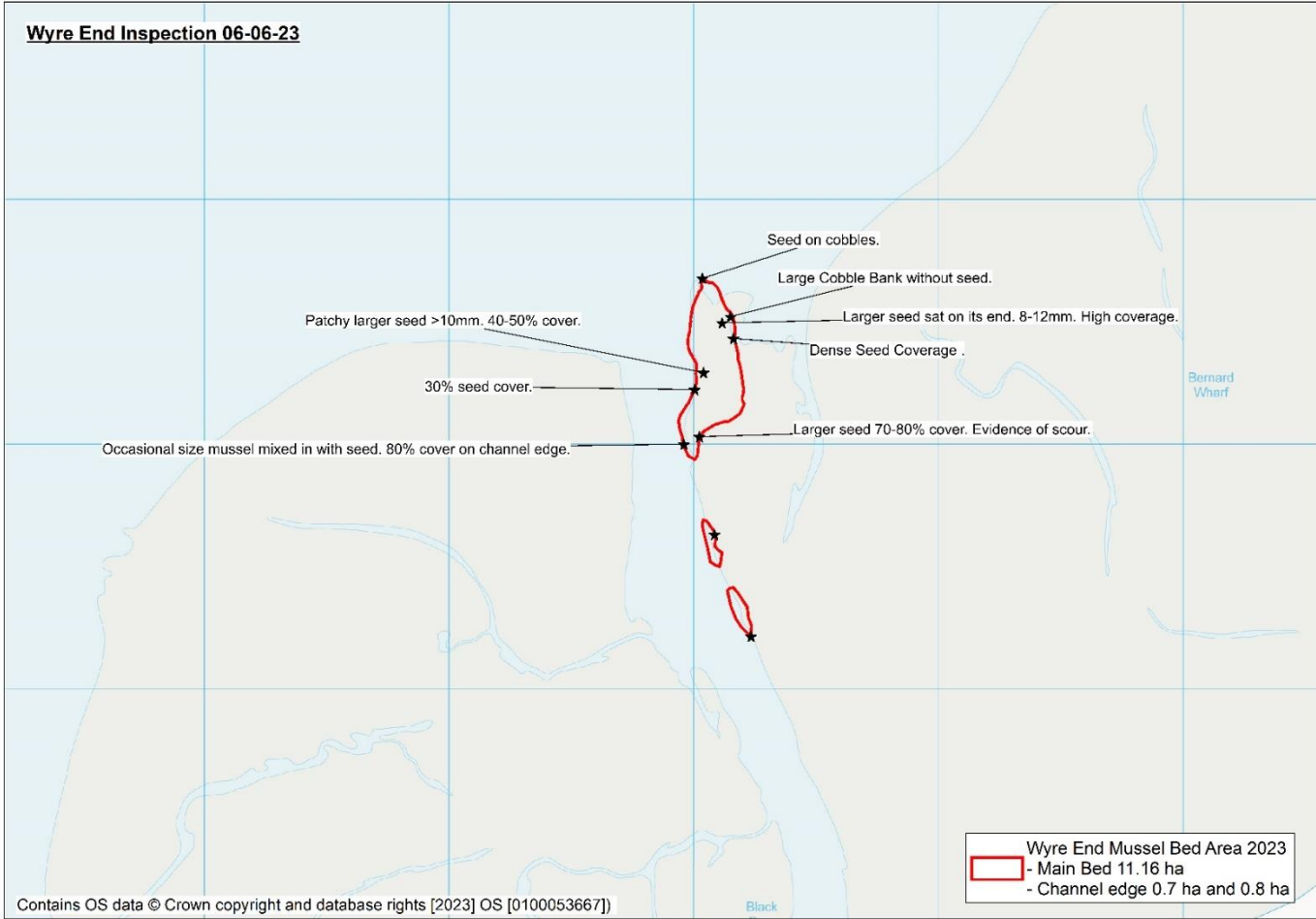


Figure 2. Approximate bed area boundaries and observations of the bed made by officers.

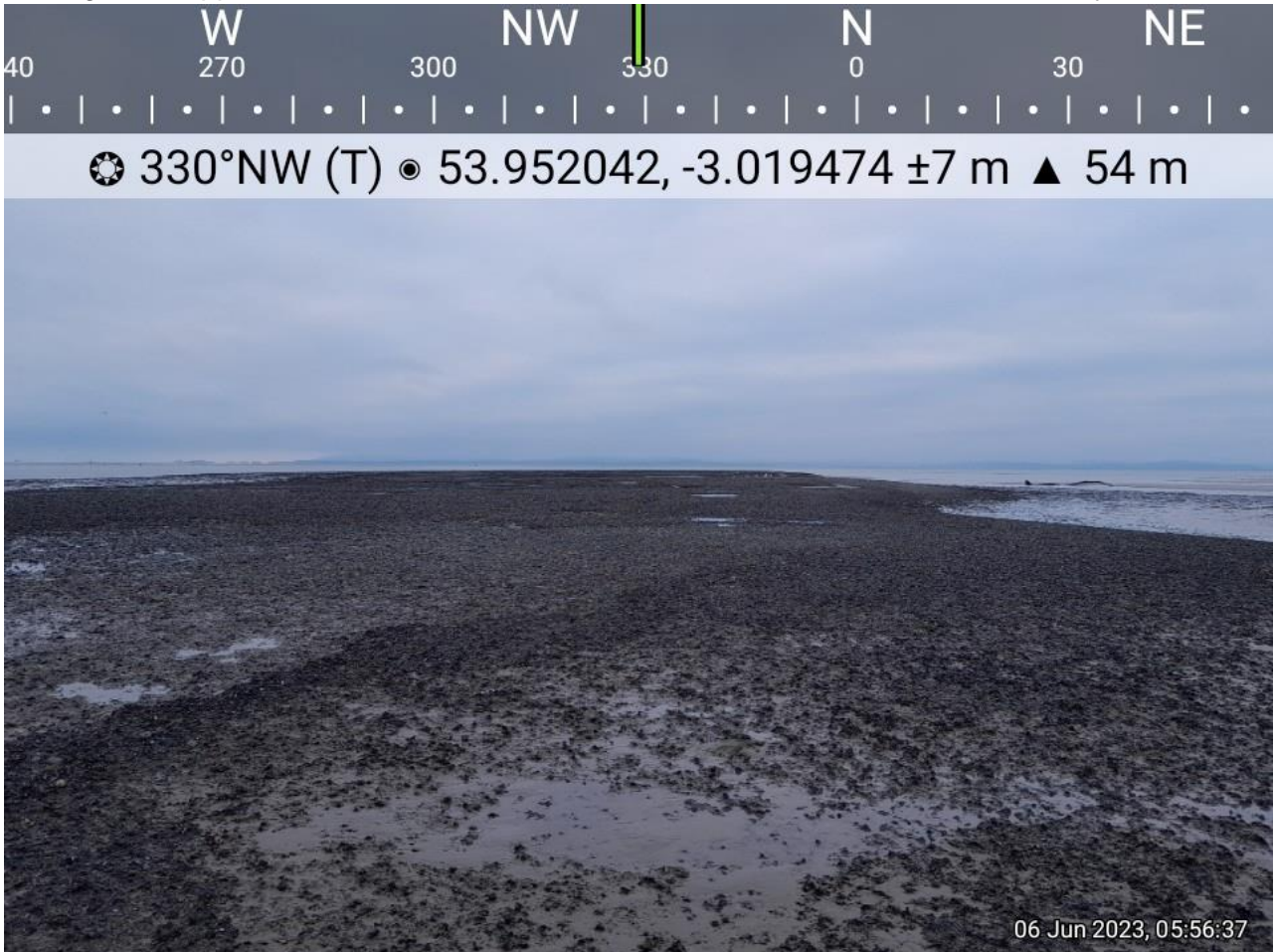


Figure 3: Wyre End Mussel Bed 06-06-23.

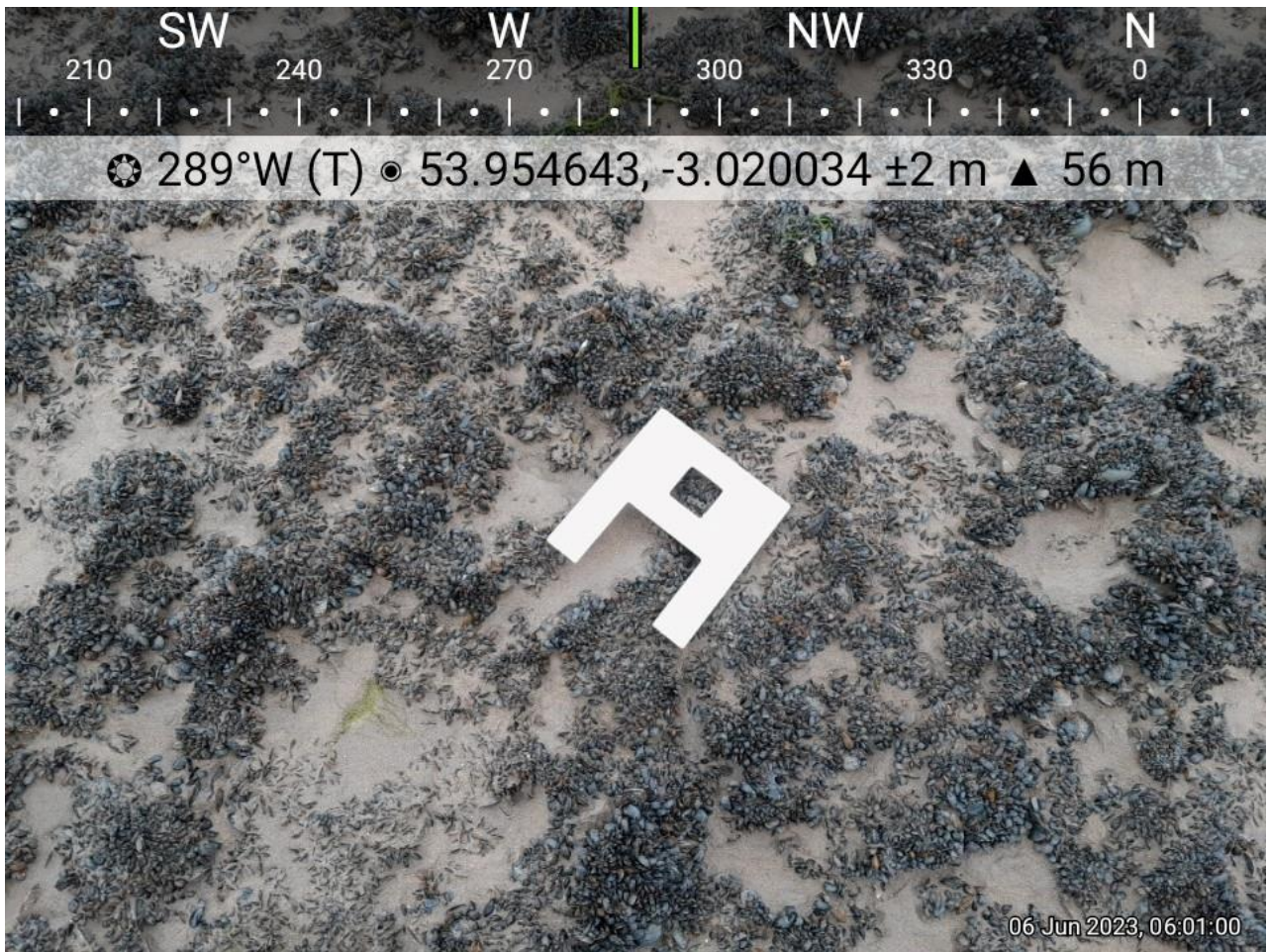


Figure 4: Seed settlement Wyre End 06-06-23.

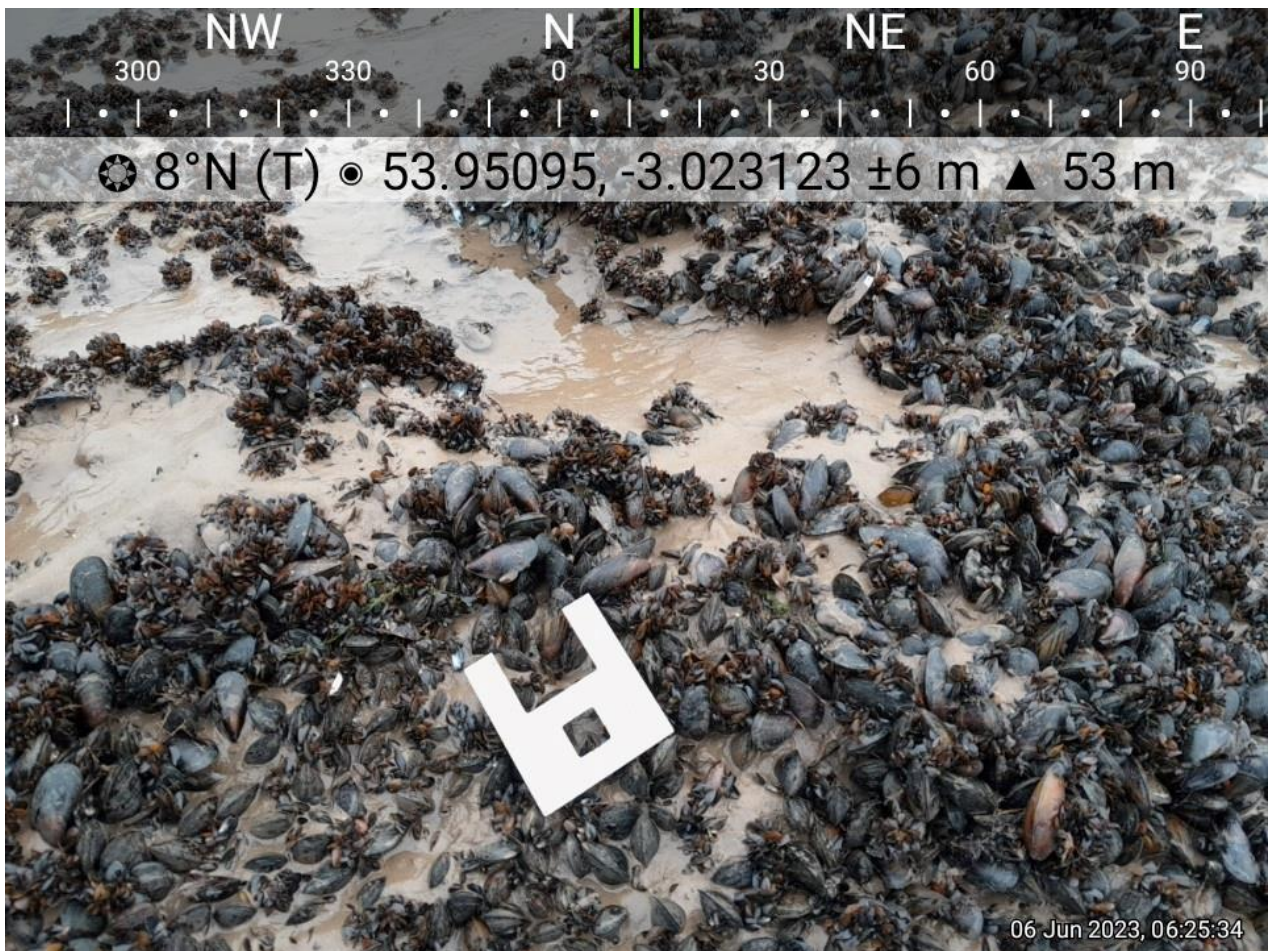


Figure 5: Occasional Size mussel mixed in with seed on channel edge.

